

# CLEAN TOP



**PREQUALIFICATION**

**2024**



# CONTENTS

1. INTRODUCTION
2. OVERVIEW
3. LOCATION
4. ROLE & RESPONSIBILITY
5. ORGANIZATION
6. TECHNICAL MANPOWER
7. ENGINEERING ACTIVITIES
8. CORE TECHNOLOGY
9. BUSINESS
10. QUALITY & VALUE MANAGEMENT
11. DESIGN SOFTWARE & TOOLS
12. SUSTAINABLE GROWTH

A lush green forest with tall trees and a mossy log in the foreground. The scene is vibrant with various shades of green, from the deep forest floor to the bright sunlight filtering through the canopy. The text is overlaid on a semi-transparent green band across the middle of the image.

## **INTRODUCTION**

Since its establishment in 2003, GLOTEC Engineering has been delivering comprehensive engineering services, including feasibility studies, basic design, detail engineering, procurement support, and field engineering with supervising works. GLOTEC Engineering provides these services to address client needs of various industries such as Oil and Gas, Energy, Power generation, Semiconductor and Industrial plant business.

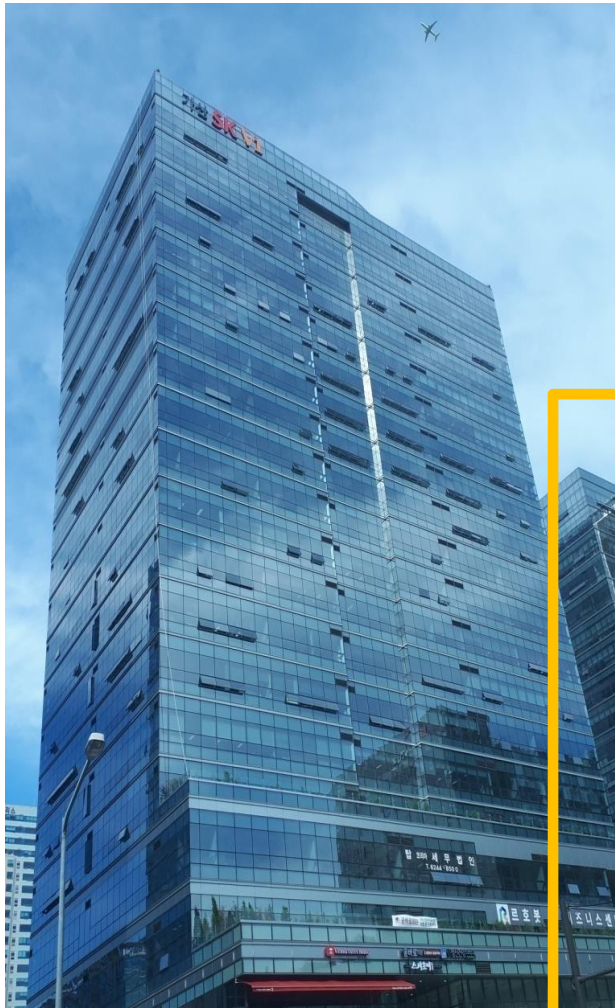
Especially we are actively responding to customer needs based on the advanced engineering technology such as Concurrent 3D Modeling, BIM design, and Modularization design. GLOTEC Engineering will continue to step forward and provide excellent engineering solutions that ensure customer satisfaction and trust.

# OVERVIEW



- 2023.** Sep. Awarded as an Outstanding Job-Creating Company
- Jun. Awarded the Silver Tower Order of Industrial Service
- Jan. Established GLOTEC USA Inc. in Atlanta, USA
- 2022.** Jan. Registered at KEEA for Elec. Power Design License
- 2021.** Sep. Certified as a Management Innovation SMEs
- 2020.** Jun. Registered at Construction Technical Consultancy License
- Jun. Registered at Architects of KE&CA
- Api. Registered at Firefighting Supervision License
- 2019.** Jun. Joined to Korea Plant Industries Association (KOPIA)
- Jun. Certified as a Global Leading Company from KICOX
- 2018.** Sep. Renewal of Registered ISO 9001: 2015 Certification
- Sep. Moved office to SK V1 Center, Gasan-dong, Seoul
- 2012.** Aug. Established the affiliated research institute
- 2011.** Mar. Registered at the International Contractors Association of Korea
- 2009.** Dec. Obtained ISO 9001: 2009 Certification
- 2008.** Dec. Registered at the Korea Engineering & Consulting Association (Comply with Engineering & construction law and regulation)
- May Moved office to JEI PRAZE Building, Gasan-dong, Seoul
- Feb. Company name changed to Glotec Engineering Co. Ltd.,
- 2003.** Mar. Founded as Plantech ENG corporation

**SINCE**



## Head Office

12~14<sup>th</sup> Floor, Gasan SK V1 Center  
 171, Gasan Digital 1-ro, Geumcheon-gu, Seoul, Korea  
 TEL : 82-2-6345-7000, FAX : 82-2-6345-7020

WEB : [www.gteng.co.kr](http://www.gteng.co.kr)

EMAIL : [gteng@gteng.co.kr](mailto:gteng@gteng.co.kr)

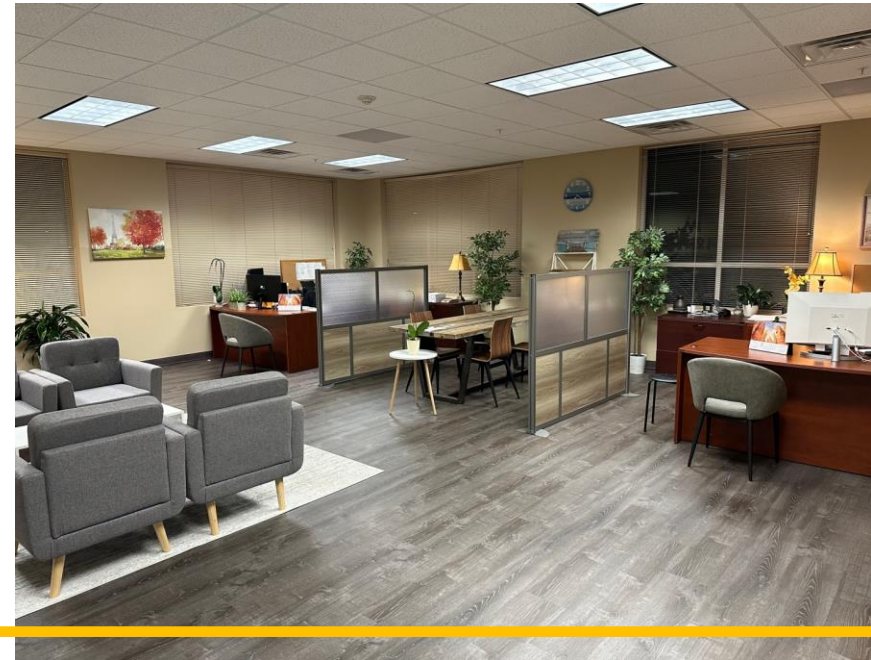
- 8,170 M<sup>2</sup> (87,940 square feet)  
530 Desks, 13 Meeting Rooms
- Number of Employees: 595 Persons (include 19 staff)



## **GLOTEC Digital Center**

**1745-1,Gwanyang-dong Dongan-gu,  
Anyang-si, Gyeonggi-do, Korea  
1~10 Floors, Glotec Digital Center Bldg.,  
TEL : +82-2-6244-8315**

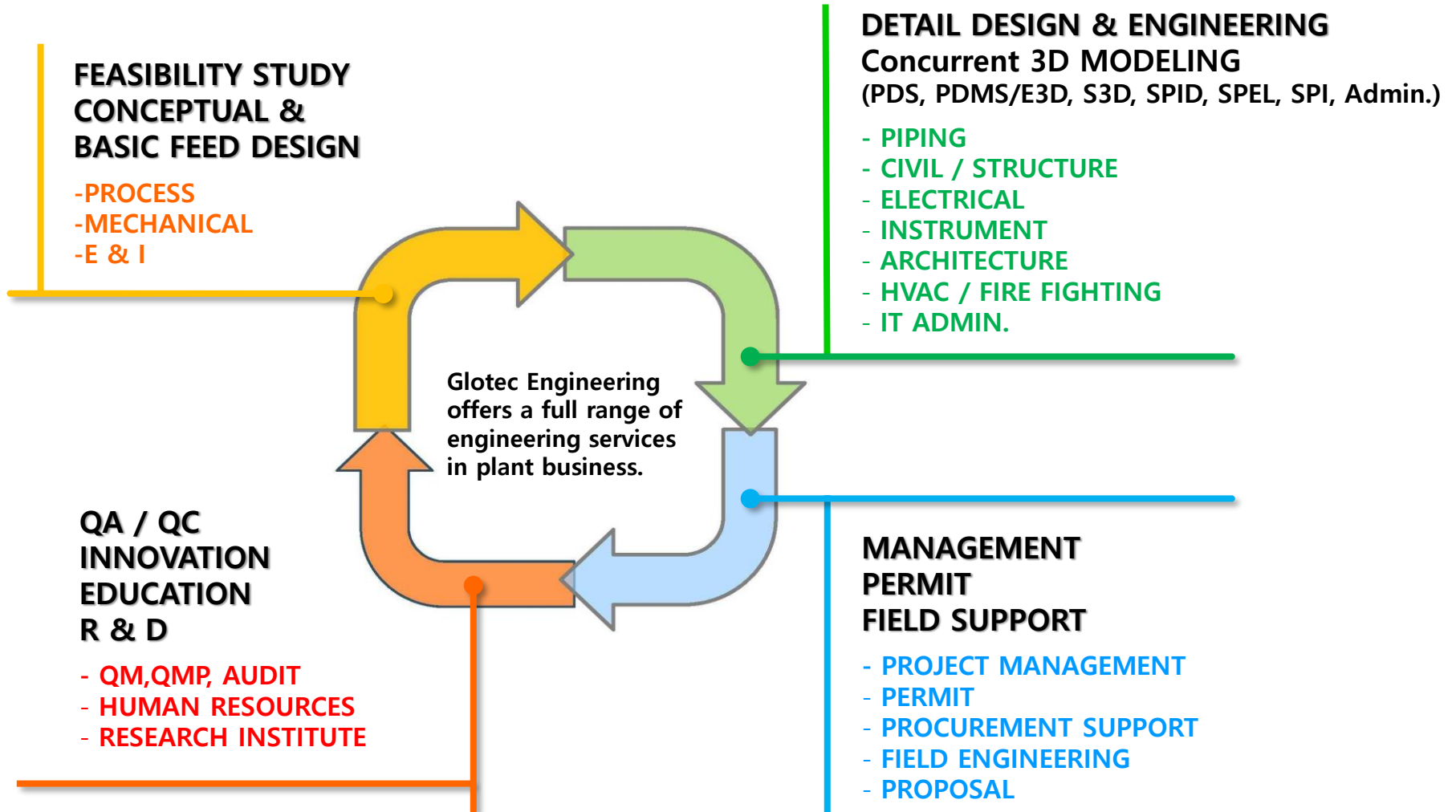
- **Total Floor Area : 16,060 M2**



## **GLOTEC Engineering USA Inc.**

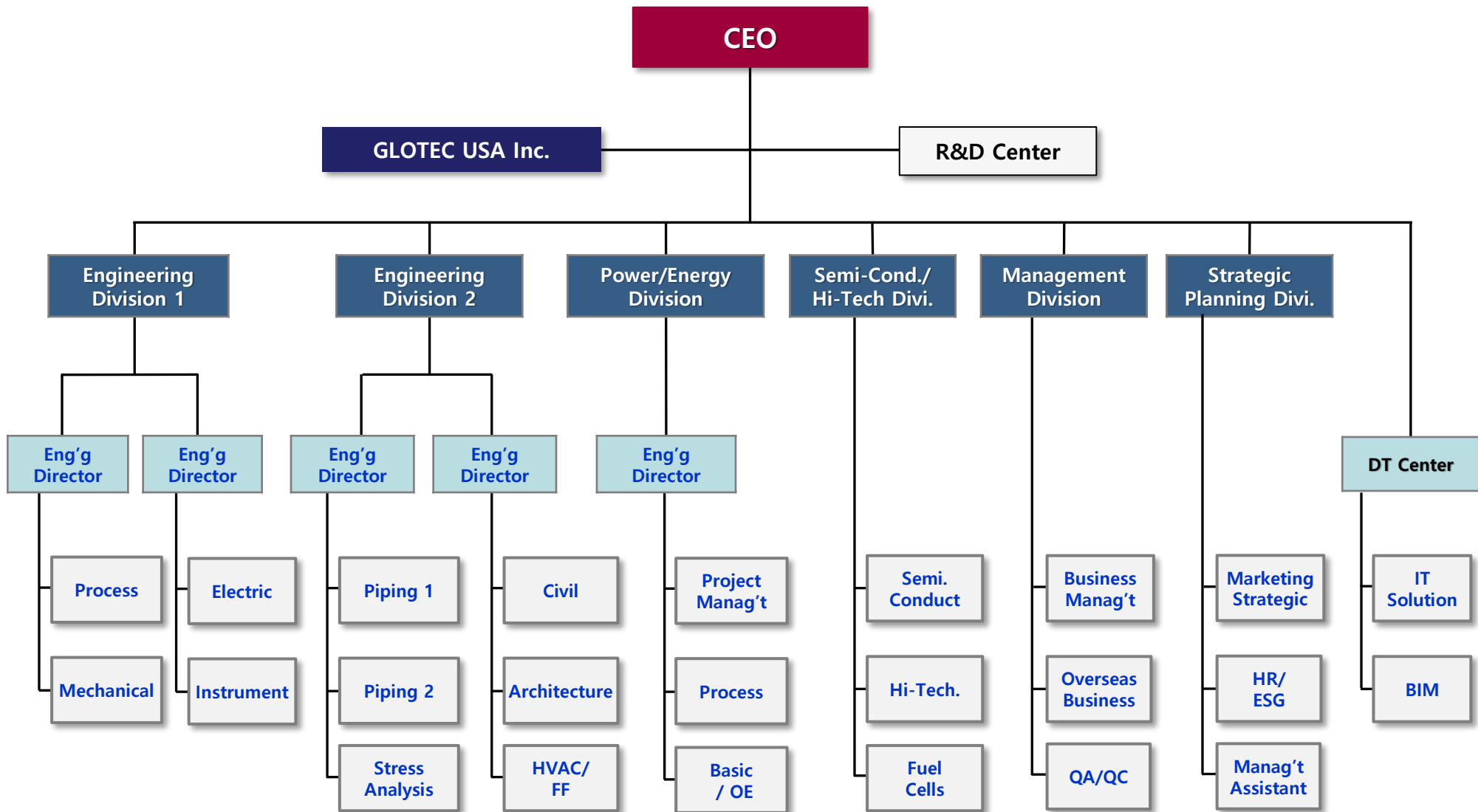
- **Tennessee Head Office :**  
5810, Shelby Oaks Drive Memphis, TN 38134, USA
- **Kentucky Branch Office :**  
123 Webster Rdg Ct Vine Grove, KY 40175, USA
- **Georgia Branch Office :**  
1180 Satellite BLVD NW, STE 200, Suwanee, GA 30024, USA  
TEL : 470-915-0188

# ROLE AND RESPONSIBILITY

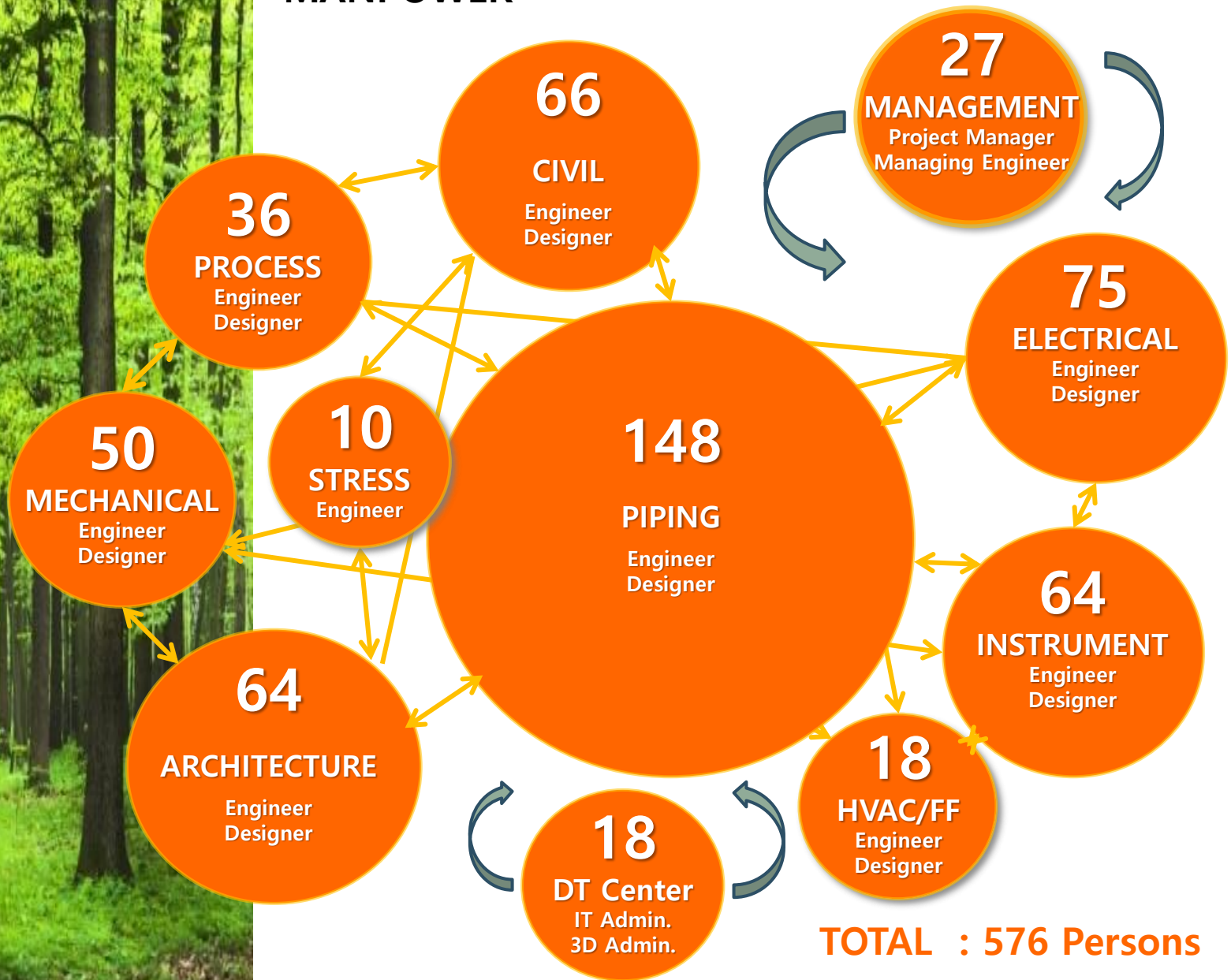




# 조직(ORGANIZATION)

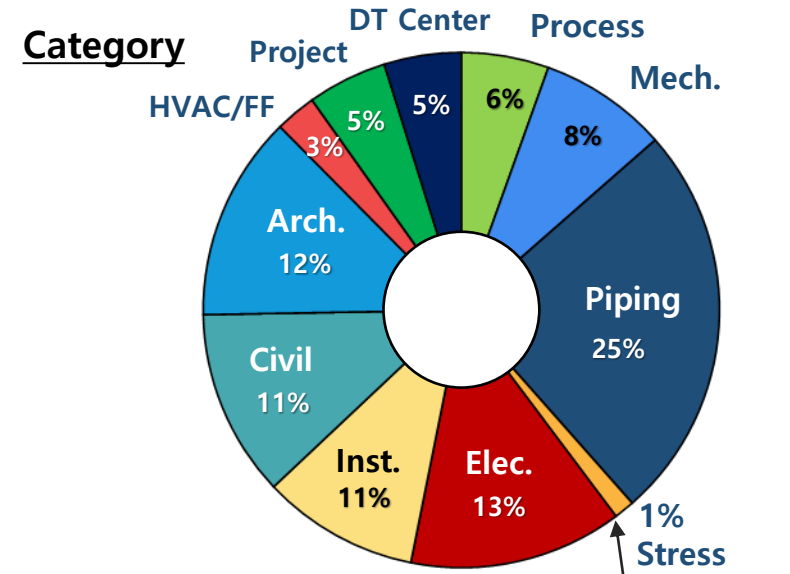


# TECHNICAL MANPOWER

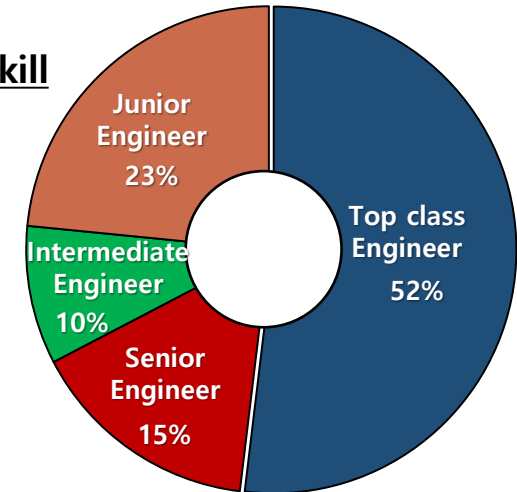


# TABLE: TECHNICAL MANPOWER

Category	Top class Engineer	Senior Engineer	Intermediate Engineer	Junior Engineer	Total (P)
Process	13	5	4	14	36
Mechanical	37	5	1	7	50
Piping	75	32	19	22	148
Stress	5	1	2	2	10
Electrical	30	7	9	29	75
Instrument	33	14	6	11	64
Civil	43	11	3	9	66
Architecture	33	8	3	20	64
HVAC & F/F	4	1	1	12	18
Project Management	20	2	1	4	27
DT Center	6	3	4	5	18
<b>Total</b>	<b>299</b>	<b>89</b>	<b>53</b>	<b>135</b>	<b>576</b>

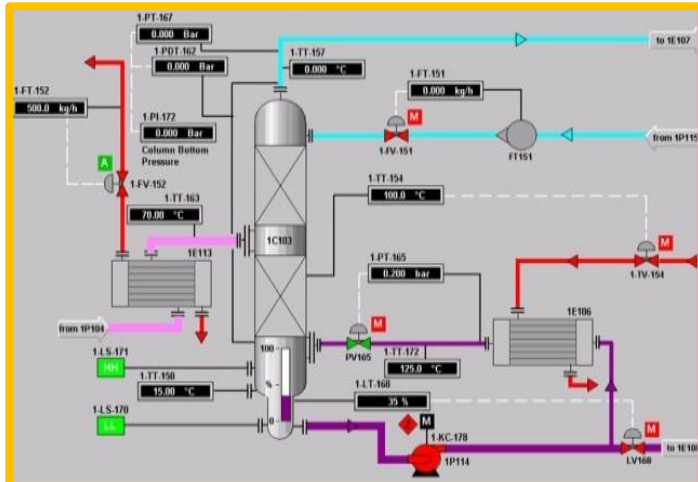


## Grades of Engineer skill



**Total 595 (Include 19 Staff)**

# ENGINEERING ACTIVITIES



## PROCESS

- Feasibility study , Conceptual, Basic & FEED Design and Engineering
- PFD and P&ID for Process and Utility
- Development & Update
  - P&ID, Piping line index, Tie-in list, Vendor data, Piping & Instrument Process Data Sheet (include Mech. etc.,)
  - HAZOP Review and SIL Study
- Provide the intelligent P&ID (SPPID)

## MECHANICAL (Static & Rotating)

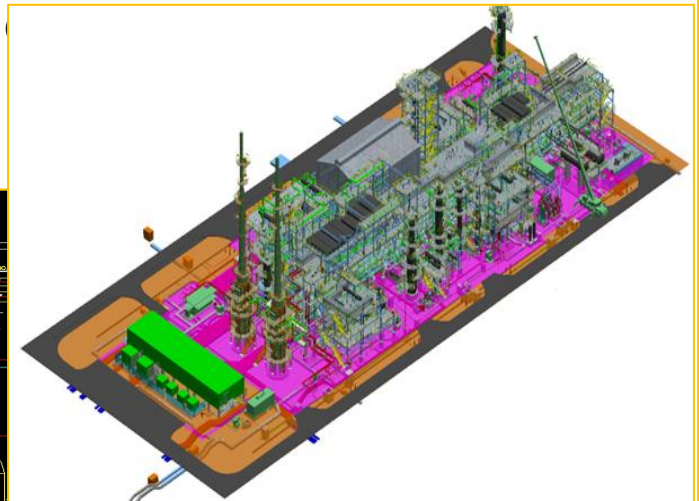
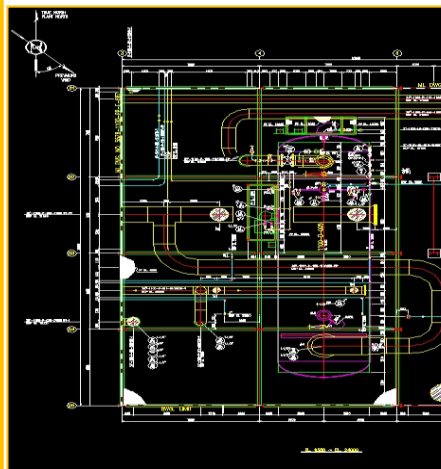
- Engineering drawings include calculation
- Detail design of Rotating, Stationary & Package Equipment
  - Vessels, Storage Tanks, Heat exchangers and Pumps etc.,
- Procurement services
  - Equipment data sheets
  - Material requisition (RFQ)
  - Technical clarification & Bid evaluation (TBE)
  - Review & approval of Vendor prints
  - Expediting and Schedule control
- Assistance on Fire Fighting & HVAC equipment design





## PIPING

- Plot plan
- Equipment location plan with routing study
- Provide the General Arrangement Drawing (GAD)
- Design the Piping plans & elevations
- Procurement service for Piping materials (MR,TBE)
- Piping support drawing and piping material handling
- Piping detail drawing and information for all disciplines
- 3D Modeling with PDS, PDMS, S3D, BIM including all Equipment
- Extract Plot Plan, ELP, GAD & ISO drawing and BM take off
- Perform the Stress analysis
- Field engineering





## ELECTRICAL

- General & Specification
  - Engineering supervision & coordination
  - Electrical equipment specification
  - Electrical equipment data sheet
- Procurement service works
  - MR/TBE/PS for electrical items
  - Review and approval vendor print
- System calculation
  - Short circuit calculation
  - Load flow and voltage drop studies
  - Large motor starting study
  - Protective relay coordination
- Design & preparation of electrical drawings
  - Single line & schematic diagrams
  - Hazardous area classification
  - Power lighting, grounding layout
  - Fire alarm & telecommunication layout
  - Load analysis / cable schedule
  - 3D Modeling (PDS, PDMS, S3D, BIM, SPEL etc.,) ..)
- Field Engineering

## INSTRUMENT

- General & Specification
  - Engineering supervision & coordination
  - Instrument specification
  - Instrument data sheets
  - Engineering study & review
  - Control system design
  
- Procurement service works
  - MR/TBE/PS for instrument items
  - Review and approval vendor print
  
- Provide the instrument detailed designs
  - Instrument index
  - Instrument logic, loop & junction box wiring diagram
  - Instrument signal wiring & cable tray layout
  - 3D Modeling (PDS, PDMS, S3D, BIM, SPI etc.,)
  
- Field Engineering





## CIVIL / STRUCTURE

- Site preparation
- Drainage , Road & Paving
- Pipe Rack Structure design
- Equip. Structure w/ FDN. design
- Dynamic loaded foundation design
- Basin & Pond structure design
- Pile system and Soil retaining structure design
- 3D Modeling (PDS, PDMS, S3D, BIM, Tekla etc.,)
- Equipment foundation design with calculation
- Shop fabrication drawing review
- Field Engineering

## ARCHITECTURE

- Engineering for Offices, Warehouses, Control buildings, Substations and Guard houses, etc. in oil & gas plants
- Engineering for FAB, CUB, Warehouses and WWT buildings etc. in semiconductor & industrial plant
- Engineering for Turbine buildings, pump house, etc. in power plant
- Calculation and Analysis for Arch. engineering
- Construction work supervision
- Domestic project permits and reporting
- 3D Modeling (PDS, PDMS, S3D, BIM etc.,)
- Field Engineering





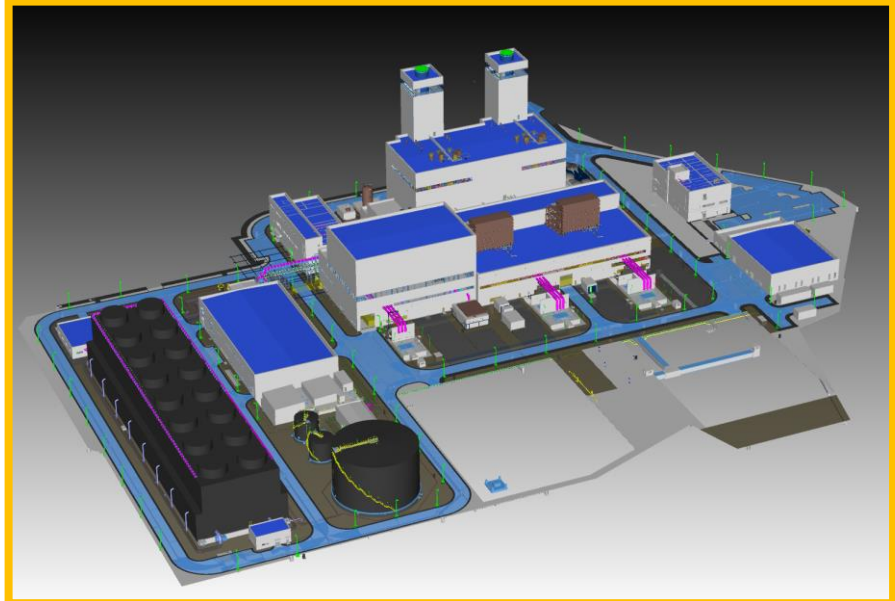


## HVAC · Fire Fighting

- Specification & Data Sheet
- HVAC, F/F & Plumbing Equipment schedule
- HVAC, F/F & Plumbing Flow Diagram
- Layout Plan & Piping Design
- HVAC, F/F & Plumbing Control System
- Bill of Materials
- Calculations
- 3D Modeling (PDS, PDMS, S3D, BIM, etc.,)
- Permits for Fire Fighting
- Procurement Support (MR, TBE)

## POWER & ENERGY

- Proposal, Basic Design & Environment Impact Assessment
- Process & Mechanical Design Criteria , Engineering Detail Schedule & PFD (Heat & Water Balance)
- MR, TBE, Technical Specification and Procurement Support
- Engineering & Design for GTG, HRSG, GOV, WT and WWT, Aux. Buildings, Vendor Package etc.,
- Field Engineering & Construction work supervision
- Project permits and reporting
- 3D Modeling (PDS, PDMS, S3D, BIM, etc.,)



## DT CENTER

- **Assist for Concurrent 3D (PDS,PDMS,S3D,BIM) Operation**

- ✓ Smart Plant Suite (SP3D, SPPID, SPI, SPEL, Admin.)
- ✓ 2D Extraction Set up (Plot Plan, ELP, GAD etc.,)
- ✓ Isogen. Set up & Trouble shooting
- ✓ Clash Report & Data Back up
- ✓ MTO Extraction Set up
- ✓ 3D Model Review Set up ( SPR, Navisworks)
- ✓ Tekla program (Steel Structure) Back up

- **Software & Hardware System & License Management**

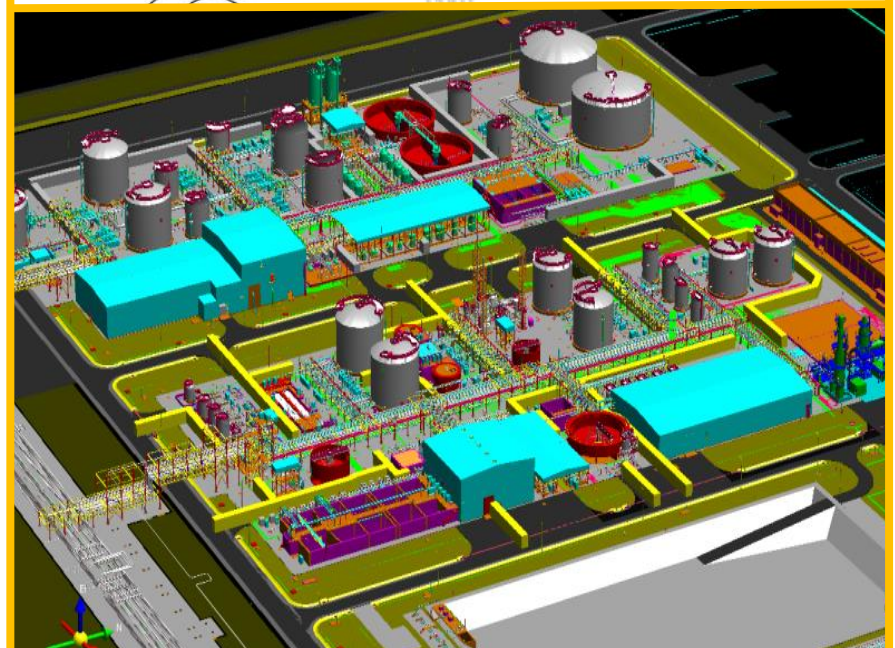
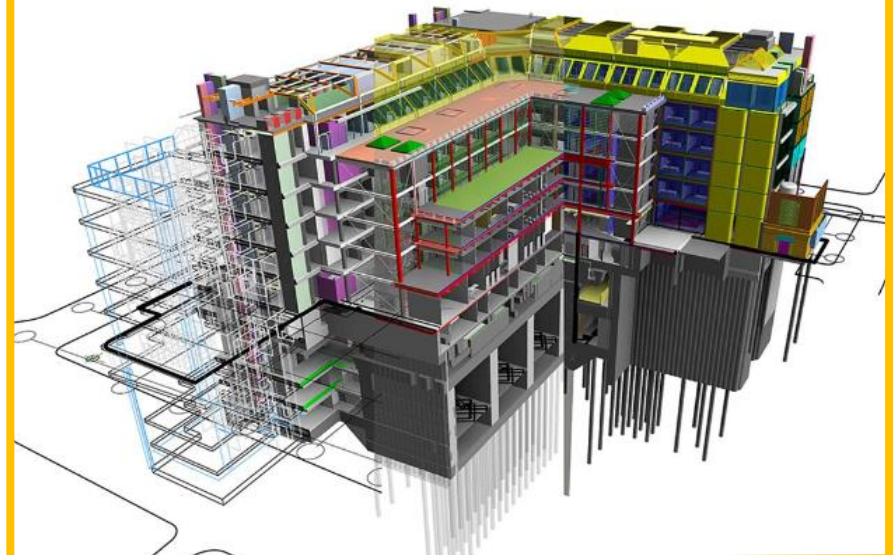
- **D/B Server Set up**

- **BIM Admin.**

- **Drawing Format Set up**

- **Support for Vendor Package 3D Model Import**

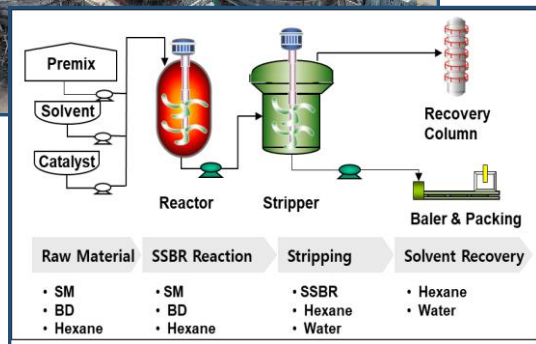
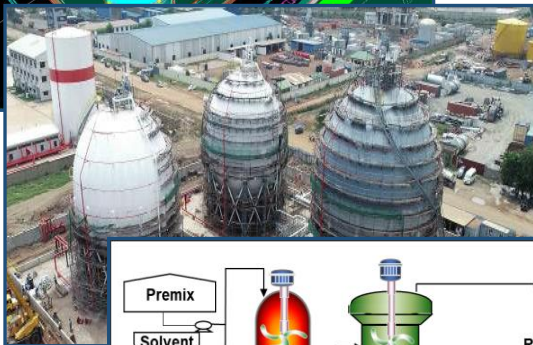
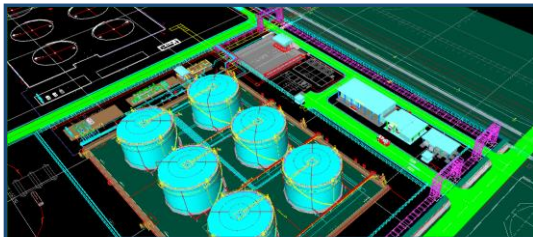
- **Assistance on As-Built 3D Model Issue**



# CORE TECHNOLOGY I

## Basic Engineering

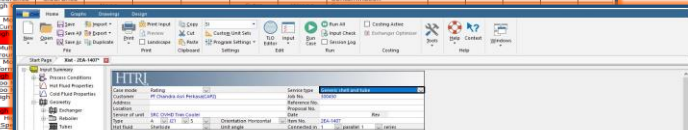
The expert engineers at GLOTEC Engineering have a diverse range of experience and technical skills in refinery, petrochemical, and fine chemicals. We utilize Steady-Status & Dynamic Simulations to perform design and engineering works, and we offer total engineering solutions to clients, from Basic engineering, Feasibility studies and FEED (Front-end engineering design) to Detail design that prioritizes safety and optimization.



HYSIS

Process	More	Less	None/No	Reverses	Part Of	An Well	Other	Abnormal Condition	Abnormal Operation	Circuit Escalate	Clearly	Contamination Change	Contamination
Variables	More	Less	None/No	Reverses	Part Of	An Well	Other	Abnormal Condition	Abnormal Operation	Circuit Escalate	Clearly	Contamination Change	Contamination
Guides Word	More	Less	None/No	Reverses	Part Of	An Well	Other	Abnormal Condition	Abnormal Operation	Circuit Escalate	Clearly	Contamination Change	Contamination

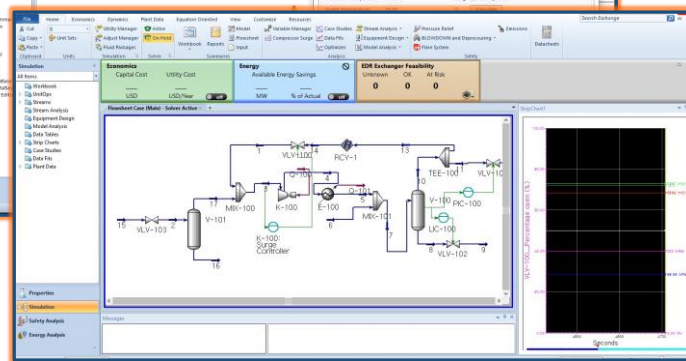
HAZOP Review



HTRI/HTFS



SIL Development

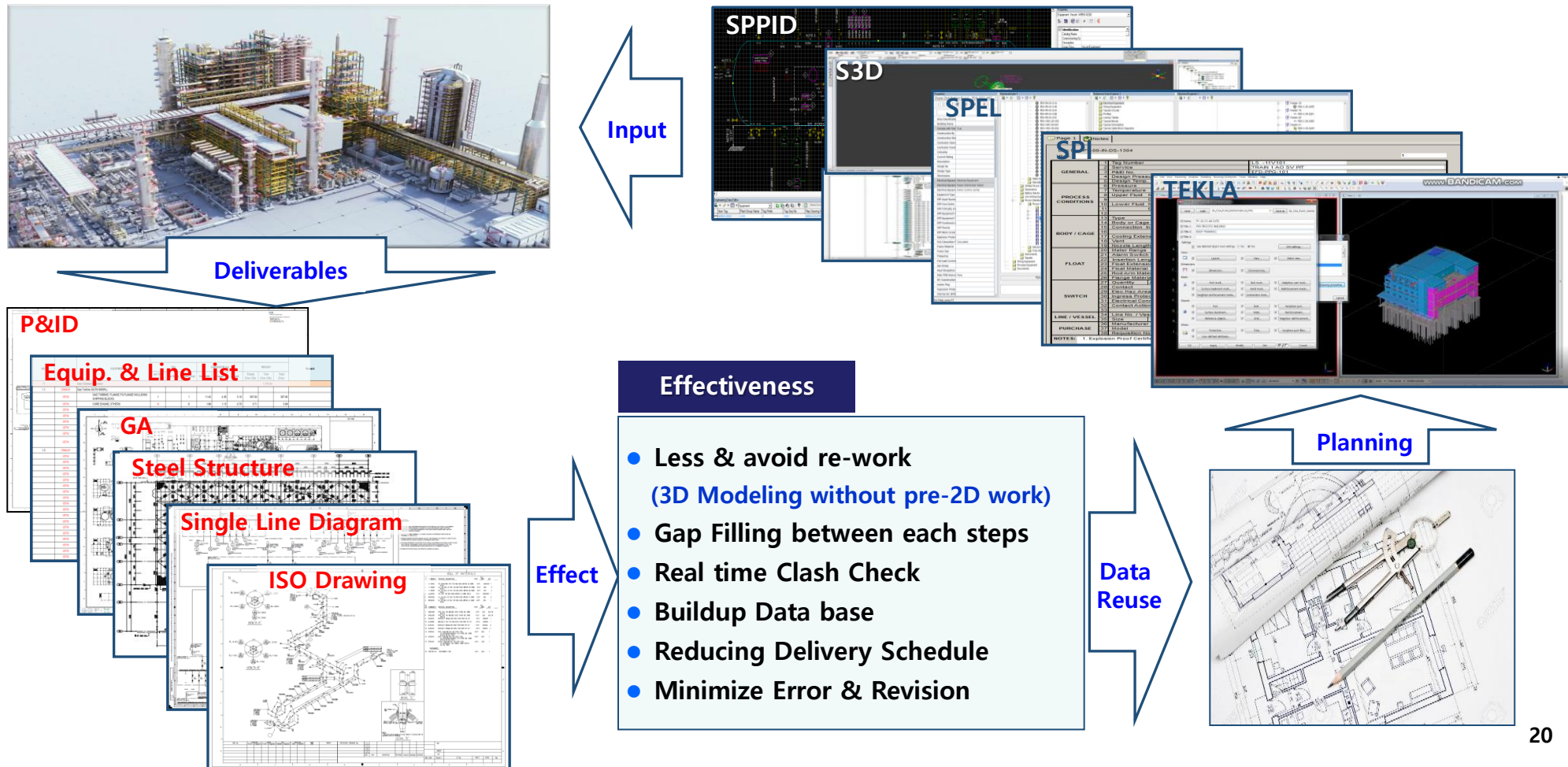


Optimization

# CORE TECHNOLOGY II

## Concurrent 3D Technology

Glotec Engineering performs concurrent 3D design using Smart 3D technology, which goes beyond existing solutions such as PDS and PDMS(E3D). To maximize reliability and efficiency, all deliverables are produced using SPPID, S3D, SPEL, SPI and TEKLA, which share data through DT solutions.



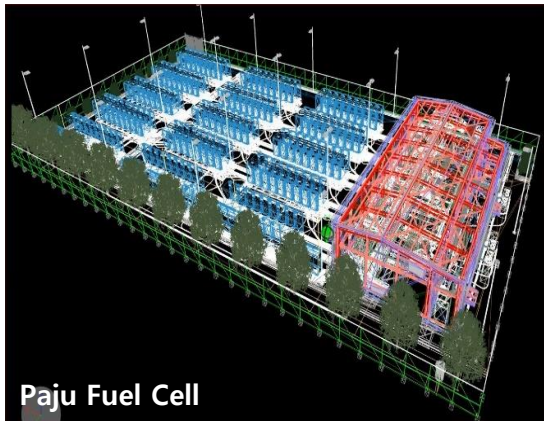
# CORE TECHNOLOGY III

## BIM – Building Information Modeling Technology

Glotec Engineering specializes in plant design utilizing BIM technology in the high-tech industries such as semi-conductor and fuel cells. With optimized IT administration support, we apply BIM for design, procurement and construction to ensure customer satisfaction.



Icheon CHP



Paju Fuel Cell

### Power Plant

- Architecture
- Building

### Application of BIM Function

- Schedule Management
- Buildup Admin.
- QA/QC : Minimize Design Errors
- SPEC. & Module design
- Field Support & Assist

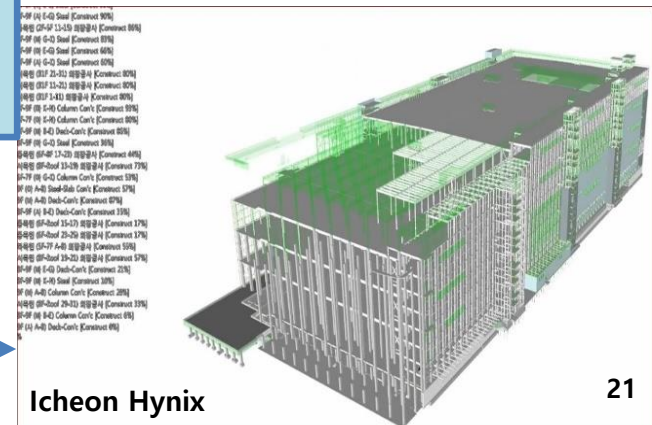
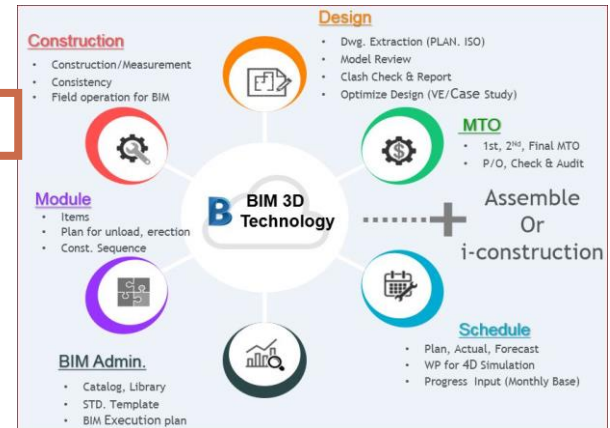
- ❖ Development & Application of BIM Admin. (Family Construction, Library, Specification D/B)
- ❖ Clash Check & Close out
- ❖ Project Schedule compression
- ❖ MTO Extraction
- ❖ 2D Drawing Format Set up & Extraction
- ❖ Field Construction Assistance

### Fuel Cells

- Civil, Architecture
- Piping, E&I, HVAC

### Hi- Tech

- Civil, Structure
- Piping, E&I, HVAC

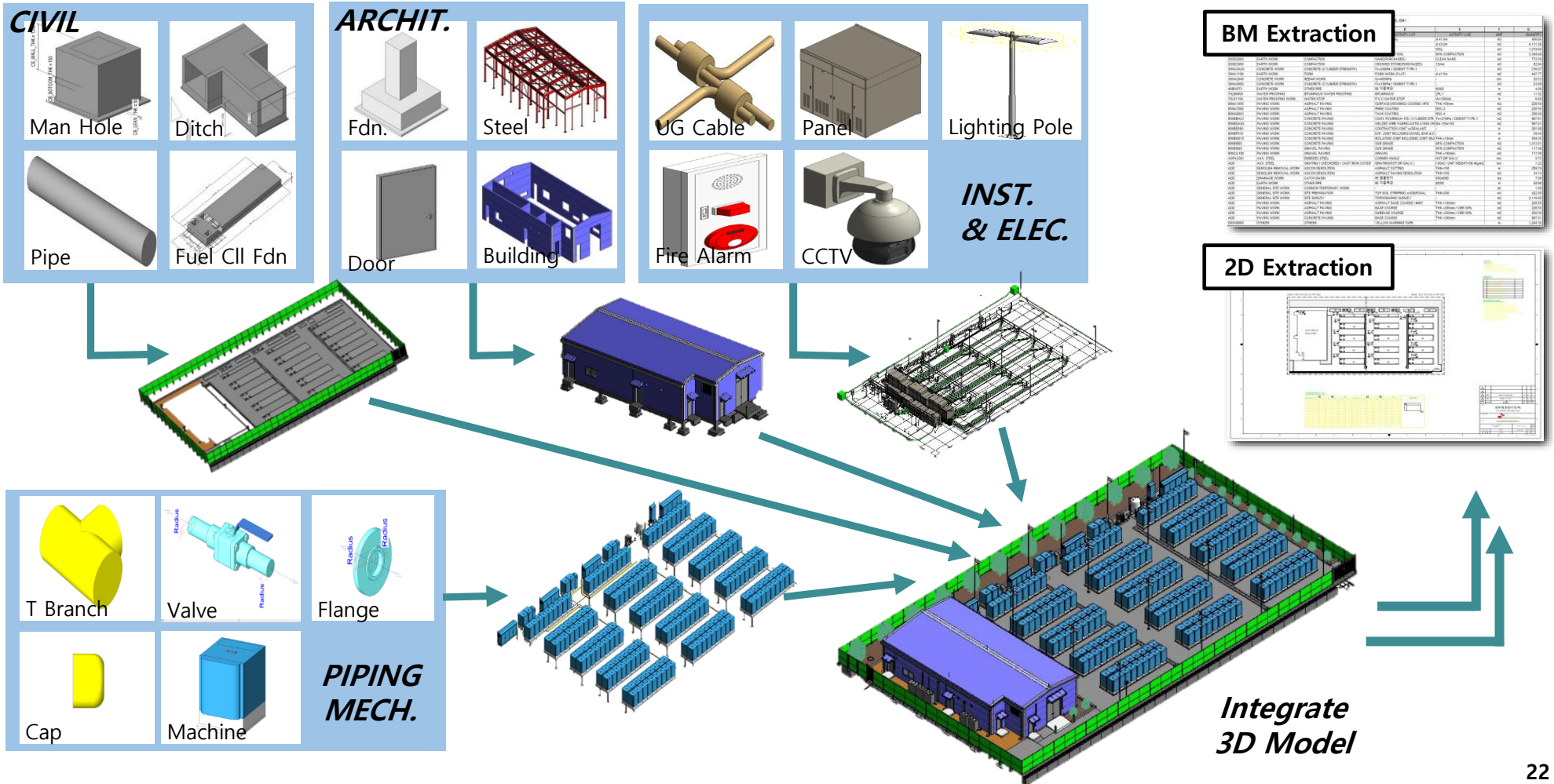


Icheon Hynix

# CORE TECHNOLOGY III

## BIM – Building Information Modeling Technology

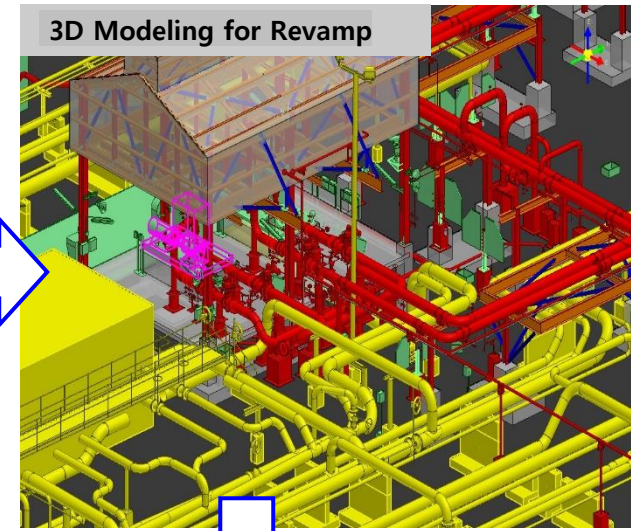
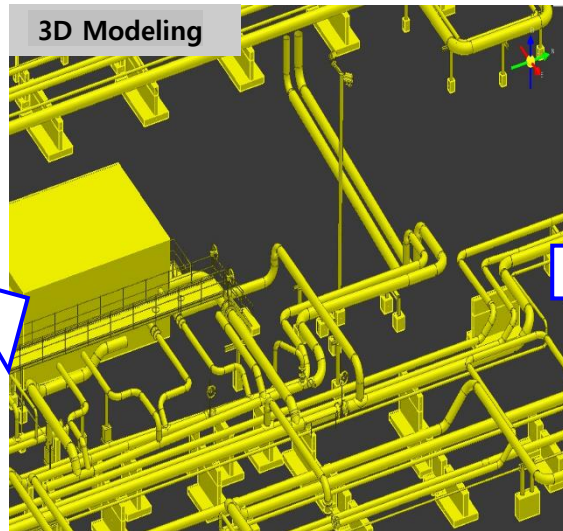
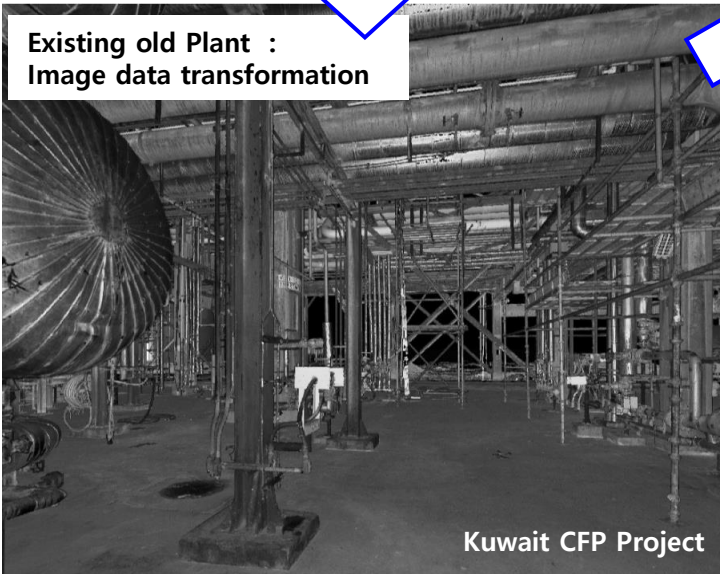
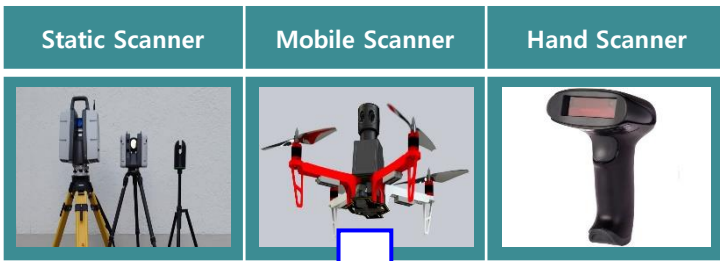
Glotec Engineering has developed an exclusive BIM administration technology. To achieve more efficient design, we apply this technology to 3D modeling for automatic material takeoff and 2D drawing extraction.



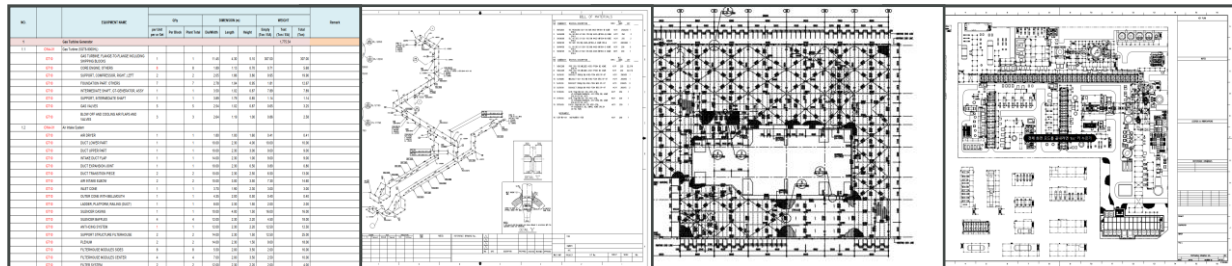
# CORE TECHNOLOGY IV

## Reverse Engineering using Laser Scanning Technology

The existing old plant has many difficulties with maintenance, repair and extension due to an insufficient document management system that resulted in a lack of relevant drawings and data. Glotec Engineering is now able to address customer demand by offering reverse engineering through image data transformation and 3D modeling, which utilizes laser scanning technology.



All Deliverables



# CORE TECHNOLOGY IV

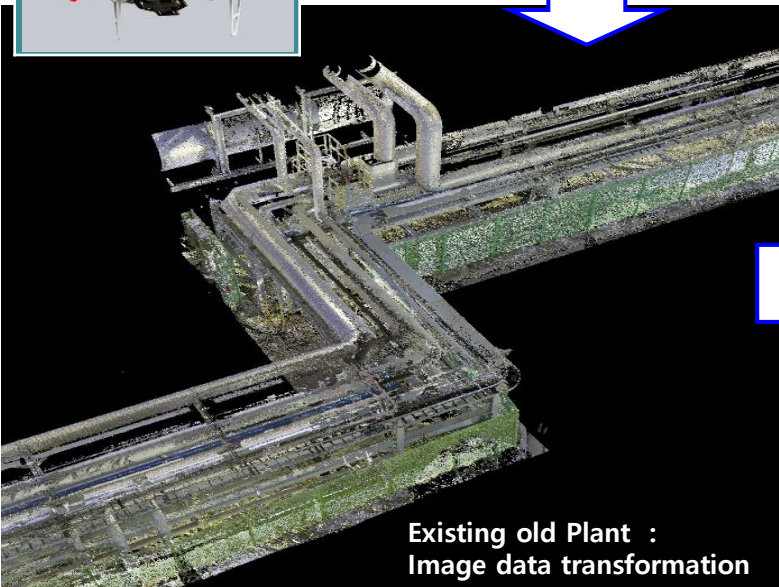
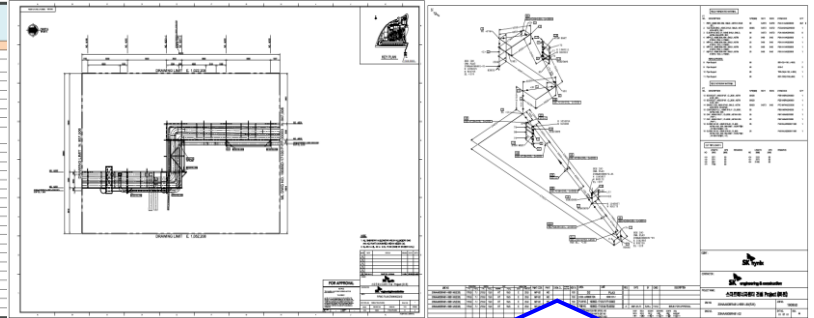
## Reverse Engineering using Laser Scanning Technology

### ► Icheon CCPP Project / OSBL Process Steam Line Revamping

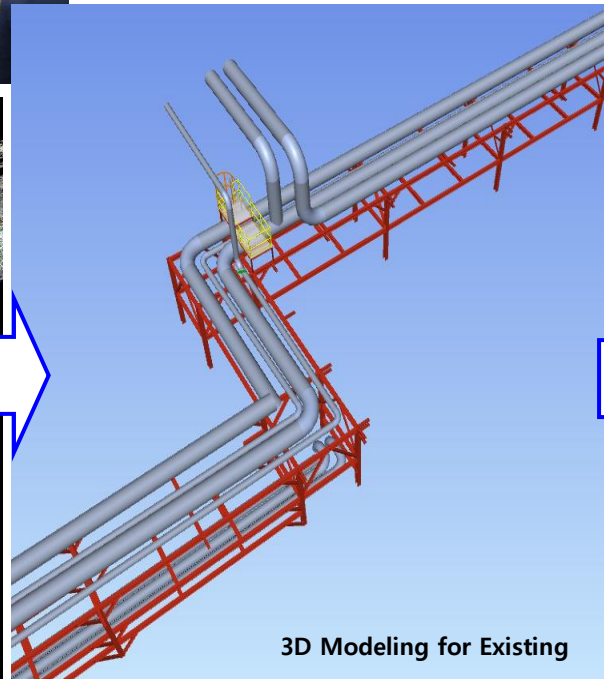


NO.	DESCRIPTION	QTY	UNIT	MATERIAL	MARKET	PRICE		TOTAL
						UNIT PRICE	AMOUNT	
1	PIPELINE	1	1	100	100	100	100	100
2	VALVE	2	2	200	200	200	200	200
3	FLANGE	3	3	300	300	300	300	300
4	WELDING	4	4	400	400	400	400	400
5	INSULATION	5	5	500	500	500	500	500
6	PAINTING	6	6	600	600	600	600	600
7	LABOR	7	7	700	700	700	700	700
8	PERMIT	8	8	800	800	800	800	800
9	SAFETY	9	9	900	900	900	900	900
10	CONSTRUCTION	10	10	1000	1000	1000	1000	1000

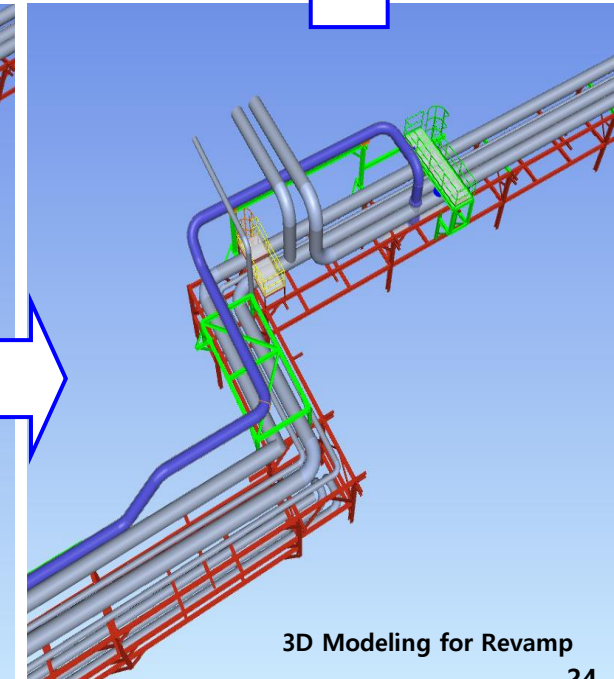
### All Deliverables



Existing old Plant :  
Image data transformation



3D Modeling for Existing



3D Modeling for Revamp



# CORE TECHNOLOGY V

## Modularization Design

Through our 3D modeling ability, we apply modularization design to oil and gas, power, and energy plants. This improves constructability, project schedule, and purchase order(P/O) for long delivery equipment, resulting in cost savings and shared project risk.

	Contents	Remarks												
Exp. Project	Fort Hills Suncor Project, Canada (Apr. '14~Nov.'15)	Modules (PAU 74, PAR 41)												
	INEOS PDH Project, Belgium (Jul. '19~Nov. '20)	Modules (PAU 12, PAR 32)												
	Lotte LINE Project, Indonesia(Nov.'21~ Feb.'24)	Module (PAR 59)												
Exp. Experts (Person)	<table border="1"> <thead> <tr> <th>Steel</th> <th>Piping</th> <th>Mech.</th> <th>E&amp;I</th> <th>PM</th> <th>Total</th> </tr> </thead> <tbody> <tr> <td>11</td> <td>21</td> <td>3</td> <td>13</td> <td>4</td> <td>52</td> </tr> </tbody> </table>	Steel	Piping	Mech.	E&I	PM	Total	11	21	3	13	4	52	Experts T/F Team in operation
Steel	Piping	Mech.	E&I	PM	Total									
11	21	3	13	4	52									
Design ability	1. Basic Concept : Module Plan (Sizing)	PAR, PAU												
	2. Detail Design : - Module Lay out & Configuration - SP3D Modeling ( Inc. Analysis) - Shop Dwg. Extraction	All discipline												
	3. Field Installation Support	COG, Inspection, Test, etc.,												



Pre-Assembled Unit

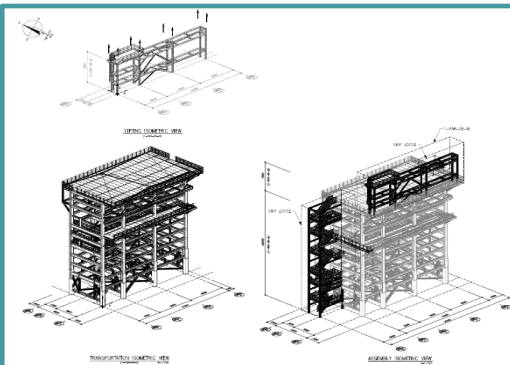
# CORE TECHNOLOGY V

## Modularization Design

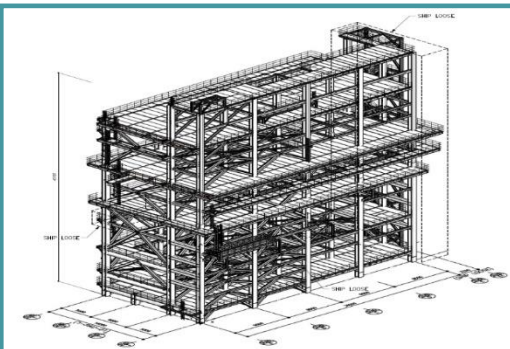
### Applicable Modularization

- Process Unit & Package (PAU)
- Main Pipe Rack (PAR)

#### PAR (Piperack)



#### PAU (Equipment Structure)



### Key Activities

#### Module design

##### PIPING

- Modularization Planning
- PAR, PAU Layout
- Temporary Support

##### STRUCTURE

- Dynamic Analysis
- COG design for SPMT
- Brace Member Connection

##### E & I

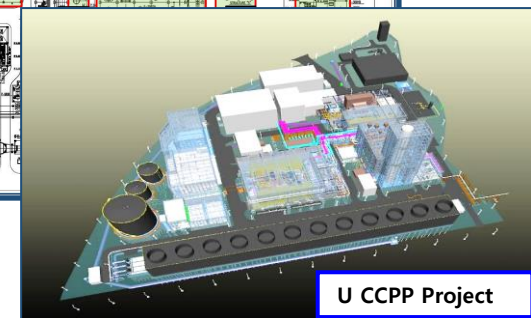
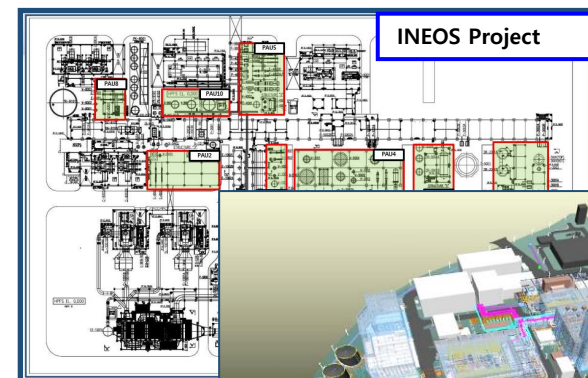
- Cable Tray ( Temp. Support )
- Lighting Pole support
- Fixed Support List
- In-Line Instrument List
- Junction Box
- Wiring installation

#### Fab./Transport./Installation

- SPMT Planning
- Land & Sea Transportation
- Packing & Fastening
- Site Stock
- Test & Inspection
- Erection

### ◆ Target Goal

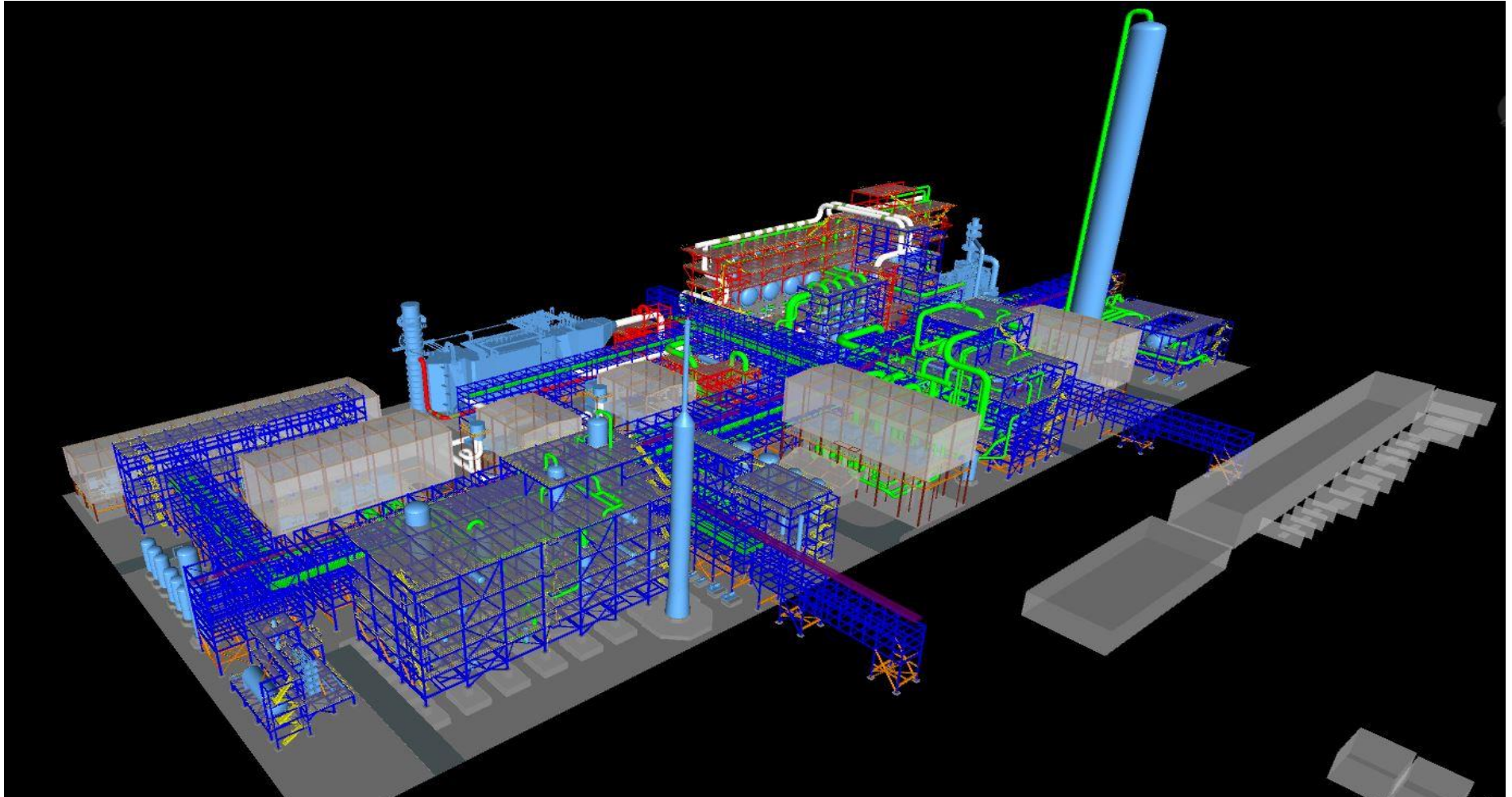
- Project Cost Saving
- Project Schedule Control
- Standardization (Design, Const.)
- Early P/O for Long Delivery Items
- Minimize Construction Risk



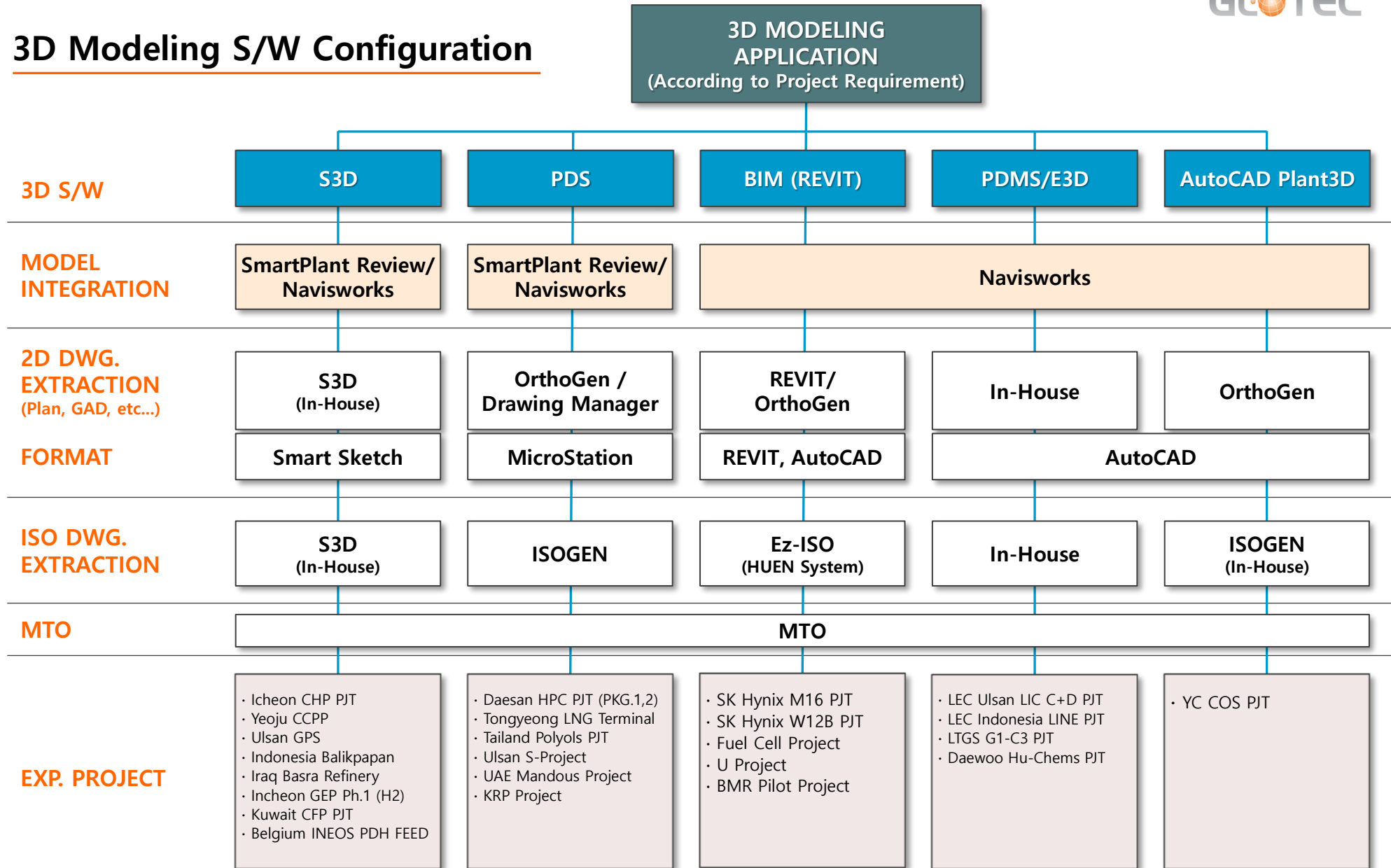
# CORE TECHNOLOGY V

## Modularization Design

3D Modularization – Belgium INEOS Project



# 3D Modeling S/W Configuration





## BUSINESS

### Extensive precision and technology

Glotec Engineering has established a competitive technology in the oil refining, gas processing, petrochemical and industrial plant engineering. It is also delivering top qualified services to our clients ranging from full basic and detail design to procurement and field engineering support.

#### Oil and Gas

- Refineries
- Oil and Gas Processing
- Petrochemicals
- Liquefied Natural Gas (LNG)

#### Power Plant

- Coal-fired Generation Plant
- Cogeneration Plant
- Renewable Energy Plant

#### Industrial Plant

- Semiconductor Plant
- Electronic Plant
- General Industrial Plant

# Major Experienced Project Summary

NO	Category	Contractor	Business Sector	Project Name	Location	Client	Period
1	Full Range*	HDEC	Petrochemical	S-Oil Shaheen PKG#1 SCC Project	Korea	ARAMCO (S-Oil)	2023.03 ~ 2026.06
2	Full Range*	Lotte E&C	Petrochemical	Yeosu G1-C3 Project	Korea	롯데GS화학	2022.06 ~ 2024.09
3	Full Range*	DAEWOO E&C	Petrochemical	Yeosu TKG Huchems 6NA/2MNB Project	Korea	TKG Huchems	2022.04 ~ 2024.06
4	Inst./Elec	DL E&C	Petrochemical	Baltic PE, LAO Project	Russia	CNCEC	2022.01 ~ 2025.01
5	Full Range*	SK ecoengineering	Petrochemical	Boryeong GEP2 Hydrogen FEED Project	Korea	SK E&S	2021.12 ~ 2022.06
6	Full Range*	Lotte E&C	Petrochemical	LOTTE LINE Project	Indonesia	Lotte Chemical	2021.11 ~ 2024.02
7	Full Range*	Wonik Material	Petrochemical	YC O-Chang COS Project	Korea	Wonik Material	2021.08 ~ 2021.12
8	Full Range*	SK ecoplant	Power Plant	Daewon Fuel cells Power Plant(19.8MW)	Korea	Daewon Green Energy	2021.02 ~ 2021.12
9	Full Range*	SK ecoplant	Petrochemical (H2)	Incheon GEP 1 H2 Feed / Detail	Korea	IGE	2021.04 ~ 2021.07
10	Full Range*	SK ecoplant	Power Plant	Ulsan GPS CCPP Power (1,200MW)	Korea	Ulsan GPS	2021.03 ~ 2022.08
11	Full Range*	KOGAS_Tech	LNG	Tongyoung LNG Terminal	Korea	TEP/Hanwha	2021.04 ~ 2024.03
12	Full Range*	Lotte E&C	Petrochemical	Lotte BP C+D Project	Korea	Lotte BP Chem.	2021.02 ~ 2022.10
13	Electric	Hyundai E&C	Refinery	Iraq Barsrah Refinery Upgrading	Iraq	South Refineries Company (SRC)	2021.02 ~ 2023.05
14	Full Range*	SK ecoplant	Industrial	BMR Pilot Plant (Battery Recycle)	Korea	SK Innovation	2020.12 ~ 2021.12
15	Full Range*	SK Energy	Petrochemical	Ulsan, IPA ( Iso Propyl Alcohol) FEED	Korea	SKGC	2020.12 ~ 2021.04
16	Full Range	Wonil T&I	Petrochemical	Pyeongteak H2 Supply	Korea	KOGAS	2020.09 ~ 2021.12
17	Full Range*	SK materials	Industrial	Sejong P Project	Korea	SK MR	2020.08 ~ 2021.05

\* NOTE : Full range of Design and Engineering service in all disciplines such a Process, Mechanical, Piping, E&I, CSA, HVAC and Fire fighting etc.,

# Major Experienced Project Summary

NO	Category	Contractor	Business Sector	Project Name	Location	Client	Period
18	Full Range*	SK ecoplant	Petrochemical	Bukhara Refinery Modernization	Uzbekistan	UOC	2020.08 ~ 2021.05
19	Full Range*	SK ecoplant	Industrial	Icheon M16 Ph-2 W12b Project	Korea	SK Hynix	2020.08 ~ 2022.10
20	Full Range*	SK ecoplant	LNG	Icheon SK Hynix UG LNG Supply	Korea	SK Hynix	2020.06 ~ 2022.10
21	Full Range*	SK ecoplant	Petrochemical	AGIC PDH & complex U&O FEED	Saudi	SK ecoplant	2020.04 ~ 2020.07
22	Full Range*	SK ecoplant	Power Plant	Paju Fuel cells Power Plant(8.1MW)	Korea	Paju Ecoenergy	2020.03 ~ 2020.12
23	DT	SK ecoplant	Power Plant	Yeoju LNG Power (1,000MW, CCPP)	Korea	SK Hynix	2020.01 ~ 2022.08
24	Mech.	Samsung Eng'g	Petrochemical	Sarawak Methanol Project	Malaysia	Sarawak, Malay	2019.12 ~ 2020.03
25	Full Range*	SK ecoplant	Combined Heat Power Plant	Icheon Smart Energy (570MW, CHP)	Korea	SK Hynix	2019.11 ~ 2022.08
26	Full Range*	Lotte E&C	Petrochemical	HPC Project / HDPE & Tankage unit	Daesan, Korea	Hyundai Chem.	2019.07 ~ 2021.12
27	Piping	Hyundai Eng'g	Petrochemical	HPC Project / ECU & DFU unit	Daesan, Korea	Hyundai Chem.	2019.07 ~ 2021.12
28	Full Range*	SK ecoplant	Petrochemical	INEOS PDH FEED Project	Belgium	INEOS	2019.07 ~ 2020.11
29	Process Stress	Hyundai E&C	Petrochemical	Marjan Increment PKG 6	Saudi Arabia	ARAMCO	2019.07 ~ 2022.10
30	Full Range*	SKE / HEC	Refinery	RDMP RU-V Balikpapan Project	Indonesia	PT PERTAMINA	2019.04 ~ 2023.07
31	Piping, Elec., Inst. Civil	SK ecoplant	Revamping	MARS Proposal Project	Thai, Rayong	IRPC	2019.02 ~ 2019.04
32	Full Range*	SK ecoplant	Refinery	Ulsan S - Project	Korea	SK Energy	2018.11 ~ 2020.04
33	Full Range*	SK Innovation	Lithium-ion battery Separator	Jiang-su LIBS Ph-1 Project	China	SK Innovation	2018.10 ~ 2020.12
34	Full Range*	SK ecoplant	Crude Oil Cavern & Pipeline	ADNOC-Mandous Project	UAE	ADNOC	2018.07 ~ 2022.01

\* NOTE : Full range of Design and Engineering service in all disciplines such a Process, Mechanical, Piping, E&I, CSA, HVAC and Fire fighting etc.,

# Major Experienced Project Summary

NO	Category	Contractor	Business Sector	Project Name	Location	Client	Period
35	Full Range*	SK ecoplant	Petrochemical (PP)	PPTGC Polyols Project	Thai, Rayong	Global Chemical	2018.02 ~ 2020.08
36	Full Range*	SK Innovation	Industrial	LIBS #12,13 PROJECT	Korea	SK Innovation	2018.01 ~ 2019.12
37	Full Range*	LG Chemical	Revamping	Daesan ATS BRU Revamping Project	Korea	LG Chemical	2018.07 ~ 2019.07
38	Full Range*	SK ecoplant	Industrial	Wuxi Hynix Project	Wuxi, China	SK Hynix	2017.01 ~ 2019.01
39	Full Range*	SK ecoplant	Industrial	Jungpyeong LIBS #10, 11 Project	Korea	SK Innovation	2016.08 ~ 2017.12
40	Full Range*	Hyundai Oil bank	Refinery	Daesan Hyundai Oil bank Tank Plant	Korea	Hyundai Oil bank	2016.06 ~ 2019.02
41	Elec. & Inst.	Hyundai Heavy Industrial	Refinery	KIPIC AL-ZOR Project	Kuwait	KNPC	2016.01 ~ 2019.06
42	Full Range*	G-TEC	Gas Terminal	Ghana LPG Gas Terminal Project	Ghana, Africa	Ghana Accra	2015.05 ~ 2020.03
43	Full Range*	SK ecoplant	Refinery	CFP Project	Kuwait	KNPC	2014.07 ~ 2020.12
44	Full Range*	SK ecoplant	Refinery including WWT, Power Plant	KARBALA Refinery Project	Iraq	SCOP	2014.06 ~ 2021.12
45	Full Range*	SK ecoplant	Gas Plant	Ulsan P- Project (PDH)	Korea	SK Gas	2014.01 ~ 2017.11
46	Full Range*	SK ecoplant	Refinery Inc. Power Plant	NSRP Complex Project	Vietnam	NSRP	2013.08 ~ 2016.12
47	Full Range*	SK ecoplant	Petrochemical	V Project (Aromatics_ ISBL, OSBL)	Korea	SK Energy	2012.04 ~ 2014.04
48	Full Range*	SK ecoplant	Petrochemical	Ulsan New PX Project (ISBL, OSBL)	Korea	SK Energy	2012.09 ~ 2014.10
49	Full Range*	Daewoo E&C	Gas Plant	HOUT Onshore Gas Project	Saudi Arabia	KJO (Aramco & KNPC)	2012.05 ~ 2014.03

\* NOTE : Full range of Design and Engineering service in all disciplines such a Process, Mechanical, Piping, E&I, CSA, HVAC and Fire fighting etc.,



## OIL & GAS

Since Glotec Engineering first entered the oil and gas industry in 2003, we have completed more than 100 projects worldwide and have grown into a full-service of engineering company.

Glotec Engineering has achieved success in petrochemical plant engineering by completing various kinds of large-scale projects, ranging from basic and detail design to field engineering support.

**HPC Project** (July. 2019 – Dec. 2021)  
ECU 800,000 T/Y, HDPE 300,000 T/Y, Tankage, Warehouse / Hyundai Chemical (HEC, LEC)

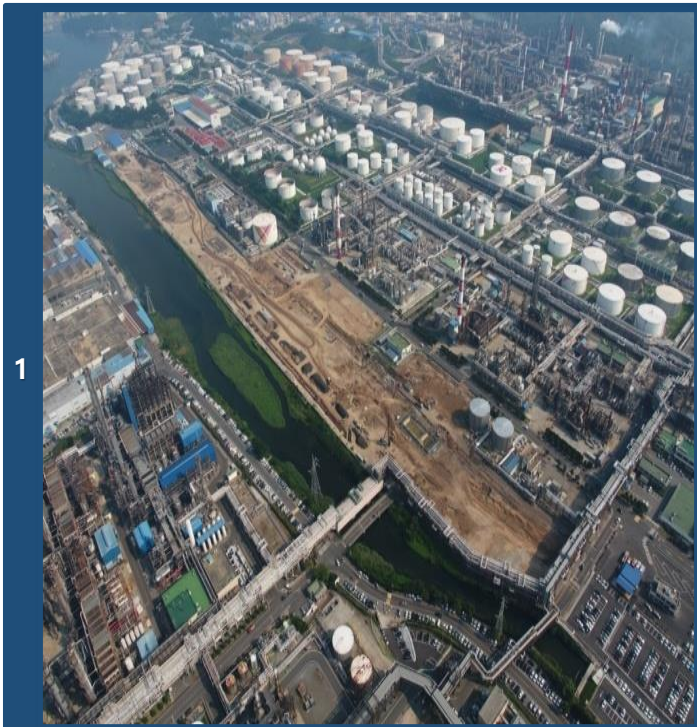
**RDMP RU-V Balikpapan Project** (Apr. 2019 – Jul. 2023)  
RFCC 90 kBSD, Indonesia/PT PERTAMINA (SKEC)

**ADNOC M-Project** (Dec. 2017 – Sep. 2019)  
Crude oil Cavern, 14,000Mbbbl x 3ea, Fujairah, UAE / ADNOC(SKEC)

**1 S Project** (Sep. 2017 – Jun. 2019)  
VRDS 30,000 B/D, Ulsan, Korea / SKE(SKEC)

**2 ATS Project** (Jun. 2018 – Jul. 2019)  
Butadiene Rubber Revamping, Daesan, Korea / LG Chemical

**3 Polyols Project** (Oct. 2017 – Apr. 2019)  
PPTGC Petrochemical, 130,000 T/y, Thailand/ PPTGC(SKEC)





- Al-Zor Refinery Project (Jan. 2016 – Jun. 2019)  
Detail for Electric & Instrument, Kuwait / KNPC(HHI)
- 1 CFP Refinery Project (Jul. 2014 – Dec. 2017)  
Clean Fuels Refining, Kuwait / KNPC (SKEC)
- 2 P (PDH) Project (Jan. 2014 – Nov. 2015)  
Propylene 600,000ton, Ulsan, Korea / SK Gas(SKEC)
- 3 NSRP complex Project (Aug. 2013 – Dec. 2016)  
Aromatics and Utility, Nghi Son Refinery, Vietnam / SKEC & JGCS
- JZR & TP Project (Jun. 2012 – Dec. 2017)  
J05 Process, J70 P/R, J77 Flare, Saudi Arabia / SKEC & ARAMCO



IRPC UHV Project (Nov. 2012 – Feb. 2014)  
Tankage and Utilities, Thailand / SKEC & IRPC

V (V-4) Project (Oct. 2012 – Jun. 2014)  
TAU, ORU, SUL process, Ulsan / POSCO ENG.

1 New PX Plant Project (Sep. 2012 – Mar. 2014)  
Para-Xylene 1,000Kmta, benzene 600Kmta, WWT, Ulsan / SKEC

HOUT Onshore Gas Project (May. 2012 – Mar. 2015)  
Gas process, Flare, Utility, Saudi Arabia / DW E&C

2 V Project (Apr. 2012 – Apr. 2014)  
ISBL, OSBL, Utility for Propane & Butane, Incheon / SK Energy(SKEC)

3 WASIT Gas Plant (#1,3,4) Project (Feb. 2011 – Mar. 2014)  
Gas Processing, Utility, WWT, Saudi Arabia/ Aramco(SKEC)



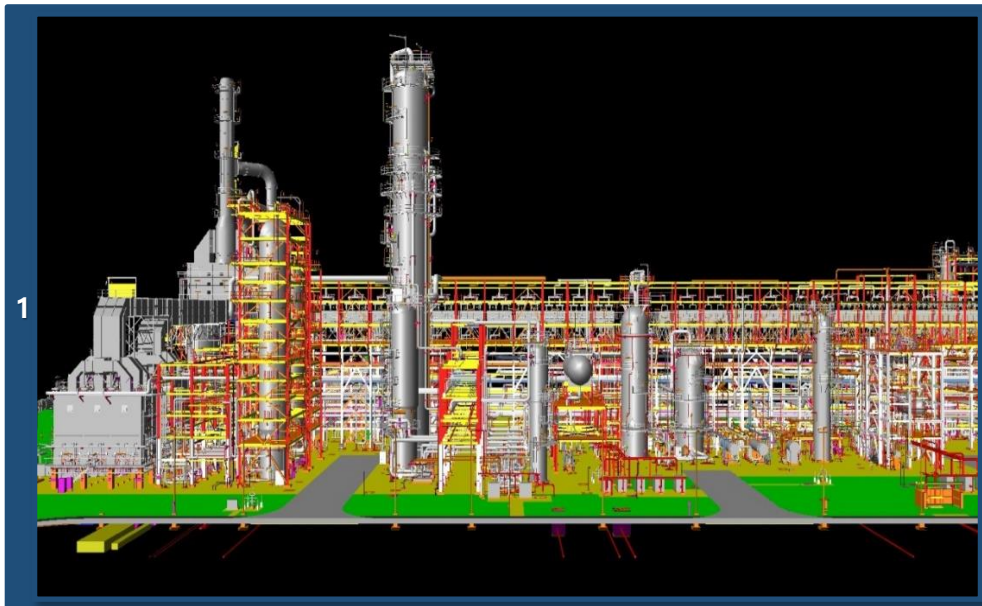
LO Tank Terminal Project (Jan. 2011 – Aug. 2012)  
Lube oil for UCO, LBO, HBO, NBO, Ulsan, Korea / SK Gas

**1** RRE (Area #1,2,3) Project (Jan. 2010 – Apr. 2013)  
Ruwais refinery expansion, 417,000BPSD, UAE/ Takreer (SKEC)

Jubail Export Refinery Project (Oct. 2009 – Sep. 2012)  
Utility facilities, Saudi Arabia / SKEC & ARAMCO

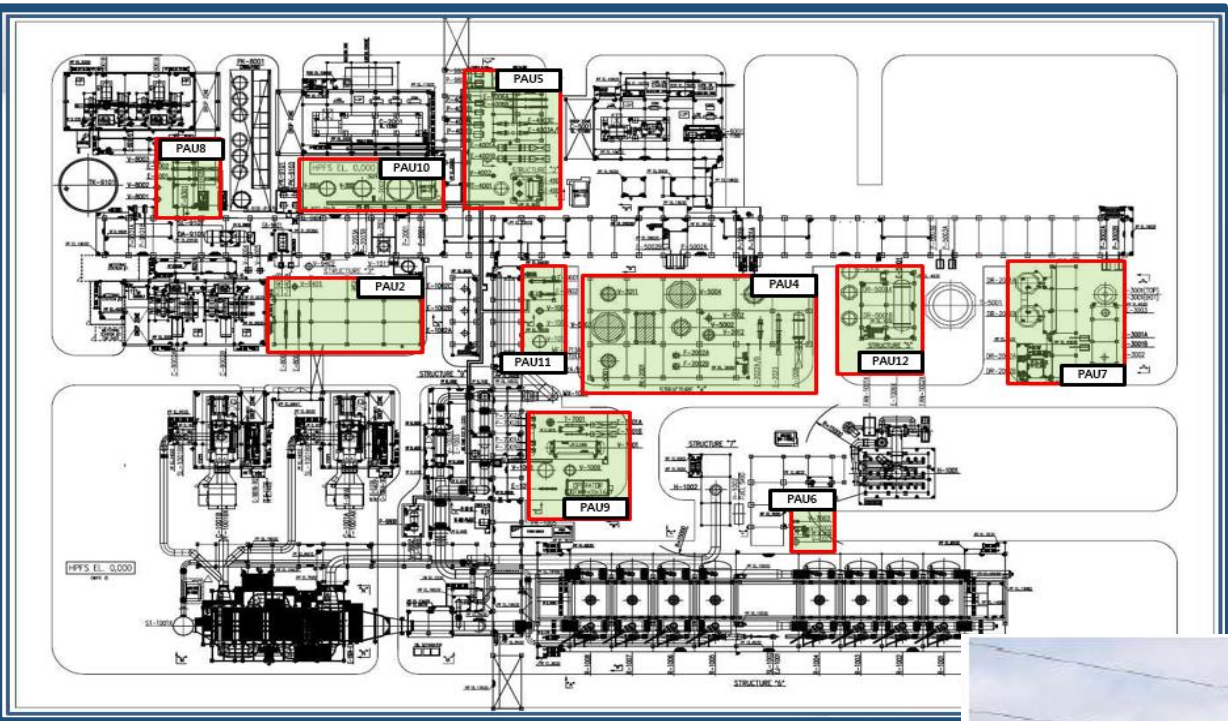
**2** New FCC Project (Jun. 2006 – May. 2008)  
Refinery 60,000 BPSD, Ulsan, Korea / SK Energy (SKEC)

**3** RPMAA Project (Jan. 2003 – Oct. 2004)  
Gas gathering & Processing, Mina Al Ahmadi, Kuwait / KNPC(SKEC)



1 INEOS PDH FEED Project / Module (Jul. 2019 – Jun. 2020)  
750KTA Propane Dehydrogenation Plant FEED, Module Design, Antwerp, Belgium / INEOS(SKEC)

1



## POWER PLANT

Glotec Engineering has successfully conducted a CCPP power plant, incorporating gas turbine and steam turbine generation, power transmission and substation, as well as a renewable energy plant due to our high technical excellence.

- 1 SK Hynix Smart Energy Center CHP Project (Feb.2020 – Mar.2023)  
570MW, 90Gcal (1+1+1) Combined Heat Power, Icheon, Korea / SKEC
- 2 SK MU LNG Power Plant Project (Sep. 2022 – Jun. 2025)  
300MW,196Gcal (1+1+1) Combined Heat Power, Icheon, Korea / SKEC
- 3 Ulsan GPS CCPP Power Plant Project ( Nov. 2021 – Aug. 2024 )  
1,226MW (2+2+1) Combined Cycle Power, Ulsan, Korea / SKEC
- KARBALA Power Plant Project (Jun. 2014 – Apr. 2016)  
Power Generation 30+20MW, Iraq / SKEC & SCOP
- Chile Coal Power Project (Jun. 2008 – Jul. 2011)  
240Mw Coal Power Plant, Chile / HEC
- Hyundai Green Power Project (Oct. 2007 – Dec. 2010)  
400Mw(100Mwx4), Dang-jin, Korea / Daelim E&C
- LNG combined Power Plant Project (May. 2004 – Oct. 2005)  
1,070 Mw LNG, Gwang-yang, Korea / Daelim Energy



## FUEL CELLS

GLOTEC Engineering not only executes numerous fuel cell projects based on advanced BIM technology, ensuring competitiveness, but also continues to grow as a leading engineering company through consistent participation in fuel cell business.

- 1 Bundang Fuel Cell Power BIM Standardization (Sep.2019 ~ Dec.2019)  
- 8MW Fuel Cell (accumulated data standardization), Pilot Modeling

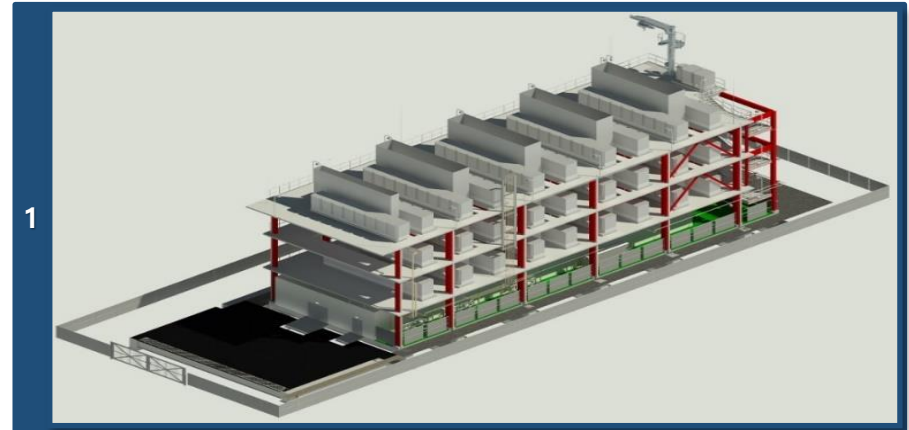
- 2 Paju Eco Energy Project (Feb. 2020 – Oct. 2020)  
- 9.8MW Fuel Cell, Paju, Korea / SKEC

- Uiwang Fuel Cell Power Generation Project (Aug. 2020 – Jun. 2021)  
- 9.9MW Fuel Cell, Uiwang, Korea / SKEC

- 3 Honam Fuel Cell Power Generation Project (Sep. 2020 – Sep. 2021)  
- 15MW Fuel Cell, Yeosu, Korea / SKEC

- Ulsan Daewon Green Energy Project (Oct. 2020 – Aug. 2021)  
- 19.8MW Fuel Cell, Ulsan, Korea / SKEC

- Paju Eco Energy 2 Stage Project (Dec. 2020 ~ Nov. 2021)  
- 16.2MW Fuel Cell, Paju, Korea / SKEC



## SEMICONDUCTOR & INDUSTRIAL

Glotec Engineering has carried out industrial plant projects that require high technologies involving semiconductors, lithium-ion battery separators, and ultra-pure water treatment facilities.

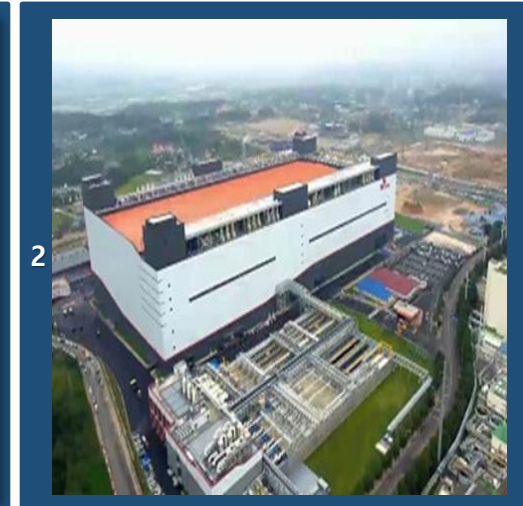
1 'M' China Ph-1 Project (Oct. 2018 – Dec. 2020)  
Lithium-ion battery separator, China / SKI

1 LiBS #12, 13 project (Aug. 2017 – Jan. 2019)  
Lithium-ion battery separator, Jeung-pyeong, Korea / SKI

2 SK Hynix M15 Ph-2 Project (Aug. 2021 – Dec. 2022)  
FAB & Wafer test C/R, UPW, PCW, WWT, Cheongju, Korea/SK Hynix(SKEP)

LiBS #10, 11 project (Aug. 2016 – Dec. 2017)  
Lithium-ion battery separator, Jeung-pyeong, Korea / SKEC

3 SK Hynix M16 Ph-2 FAB project (May. 2020 – Oct. 2022)  
FAB & Wafer test C/R, UT/OS, WWT, Icheon, Korea / SK Hynix (SKEP)





## SEMICONDUCTOR & INDUSTRIAL

### ■ Wuxi hynix project (Jan. 2017 – Jan. 2019)

FAB, Utility facility, CUB, WWT/WT Shop, Clean room extension,  
 Total floor space (new) : 294,990 M<sup>2</sup> ( 29.49 ha),  
 Building area(new) : 93,660 M<sup>2</sup> ( 9.36 ha),  
 Wuxi, China / SK Hynix (SKEC)



## SEMICONDUCTOR & INDUSTRIAL

### ■ SKMR R&D Center Project (Oct. 2020 – Aug. 2021)

DIW, IA, Scrubber, N2, Vacuum System, Clean Room, WWT

Total floor space (new) : 8,560 M<sup>2</sup>

Floor : A/G 5<sup>th</sup> Floor, U/G 1st Floor

Sejong City, Korea / SK Materials



# QUALITY AND VALUE MANAGEMENT

Glotec Engineering aims to enhance design quality and project management in order to minimize errors and maximize customer values.

## Quality Control

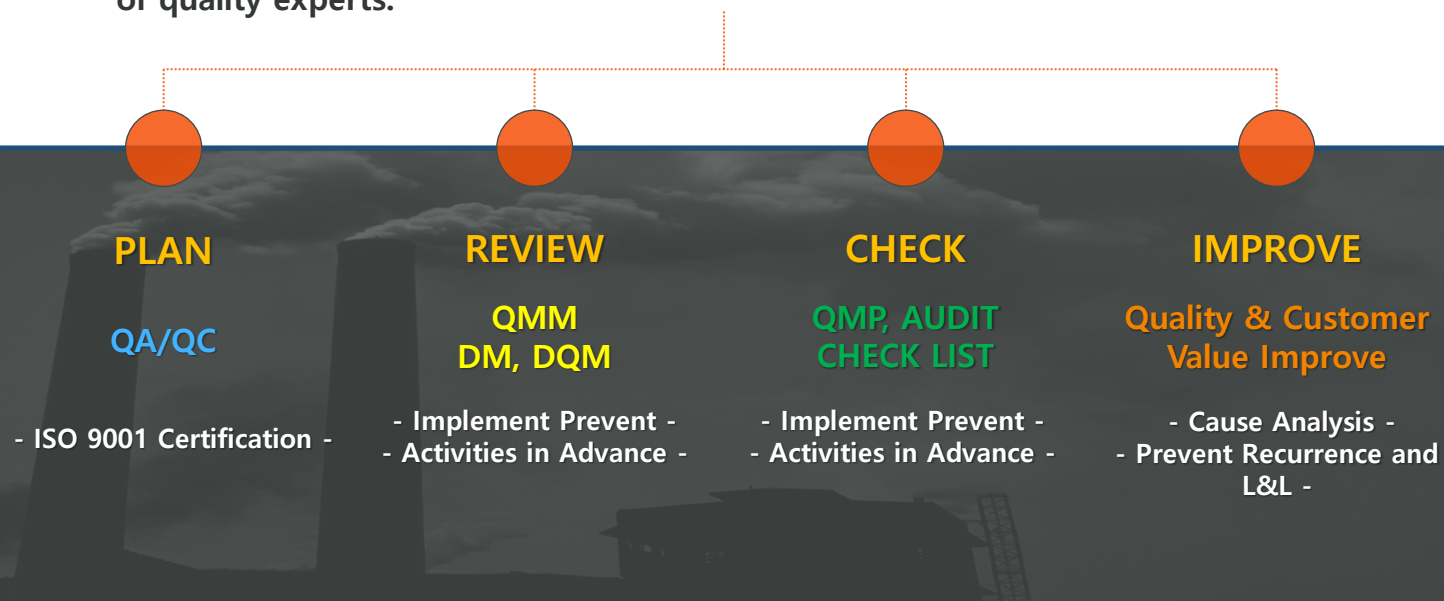
Since 2009, Glotec Engineering has been certified for ISO 9001 quality management and implements faultless quality management and control assurance in all projects.

It strives to achieve zero-defect design by ensuring quality control at each step of the work process, and it provides field engineering support through a team of quality experts.



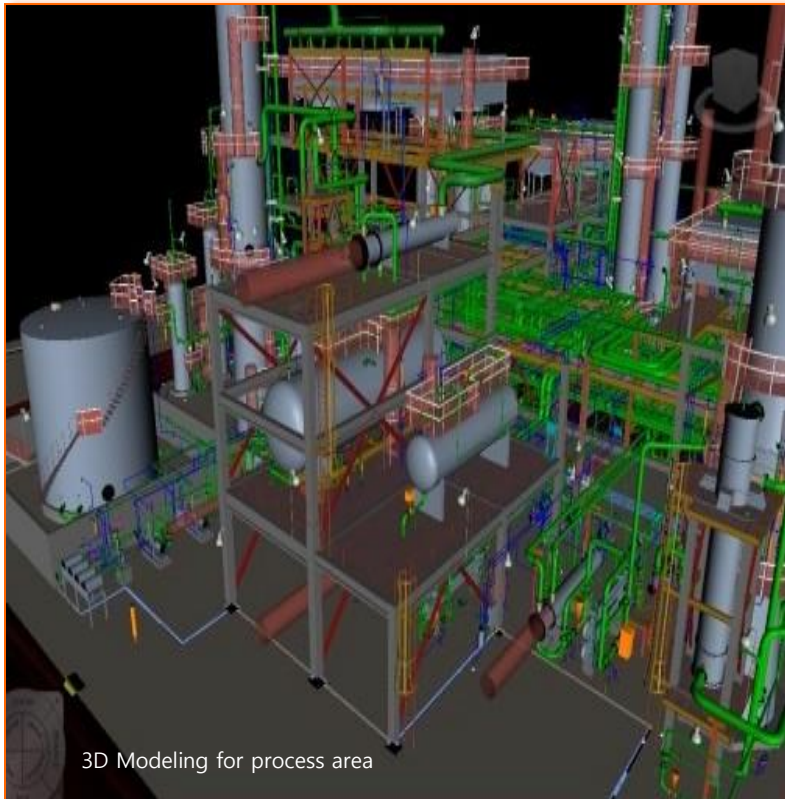
### Certifications

- ISO 9001 : 2015 /renewal
- Registered at International contractors association of Korea
- Registered at Korea engineering and consulting association



# DESIGN SOFTWARE & TOOLS

Glotec Engineering provides optimal design and engineering tools, including the latest design software. We use up-to-date techniques such as concurrent 3D modeling for improved accuracy.



3D Modeling for process area

## COMMON

- AUTO CAD ADT Network Version  
PDMS, PDS/Micro-Station,  
SP-3D, BIM (RAVIT),  
SPR (Smart Plant Review)

## PROCESS

- ASPEN HYSYS : Process Simulation  
HTRI : Thermal Rating

## MECHANICAL

- Compress : Tower / Vessel Strength calculation  
B-JAC : Heat exchanger calculation

## PIPING

- CAESAR II : Piping Stress Analysis  
● EZ - ISO & GTX Image CAD

## ELECTRICAL

- SPEL : Smart Plant / Electrical  
ETAP : Electrical transient analysis program

## INSTRUMENT

- Intools : Instrument data base & design  
SPI : Smart Plant / Instrumentation

## CIVIL STRUCTURE

- SAP2000 : Finite Element Analysis of Structures  
STADD Pro : Finite Element Analysis of Structures  
MIDAS GEN : Finite Element Analysis of Structures  
InROAD : Site Grading  
iAFES : Foundation Analysis  
PEDAS : Foundation Analysis  
TEKLA : 3D Modeling

### Business license

**사업자등록증**  
(법인사업자)  
등록번호 : 108-81-59497

법인명 (단체명) : (주) 글로텍엔지니어링  
대표자 : 김균

개업연월일 : 2003년 03월 07일 법인등록번호 : 110111-2733213  
사업장소재지 : 서울특별시 금천구 가산디지털1로 171, 12층 1201호-1218호, 13층 1301호-1318호(가산동, 가산 에스케이 브이원 센터)  
본점소재지 : 서울특별시 금천구 가산디지털1로 171, 12층 1201호-1218호, 13층 1301호-1318호(가산동, 가산 에스케이 브이원 센터)  
사업의종류 : 일반 서비스 중대 플랜트엔지니어링, 소방시설설계업(전기기계) 컴퓨터프로그래밍 및 시스템 통합구축 정보통신업

발급사유 : 정정

2020년 04월 24일  
금천세무서장

### Declaration of engineering business

발급번호 : 20210707-SG-00000178924

#### 엔지니어링사업자 신고증

명칭	(주)글로텍엔지니어링		
대표자명	김균	생년월일	
소재지	서울특별시 금천구 가산디지털1로 171 가산 에스케이 브이원센터 12,13층	전화번호 (FAX, E-Mail)	02-6345-7000 02-6345-7040
엔지니어링업	신고번호	제 E-01-000259 호	
	기술부문	화학 등	6 개 부문
	전문분야	화공 등	9 개 분야
엔지니어링 컨설팅업	신고번호		
	기술부문	등	개 부문
	전문분야	등	개 분야
신고연월일	2008-12-17		

『엔지니어링산업 진흥법』 제21조제1항 및 같은 법 시행규칙 제7조에 따라 위와 같이 신고하였음을 증명합니다.

2021년 07월 07일  
한국엔지니어링협회장

### Certificate of membership (Korea Plant Industries Association)

KOREA PLANT INDUSTRIES ASSOCIATION

CERTIFICATE OF MEMBERSHIP

## 회원증

회원번호: 플협 제 19-417호  
Register No.

업체명: (주)글로텍엔지니어링 / Glotec Engineering co., Ltd  
Name of Member

대표자: 김균 / Kim Gyun  
President

상기 업체는 본회 회원이므로 이 증서를 드립니다.  
The membership is granted in accordance with the act and articles of this association.

2019년 06월 14일

한국플랜트산업협회장

## Certification of international contractor

■ 해외건설촉진법 시행규칙 [별지 제3호서식] <개정 2014. 2. 14> (양쪽)

제 645 호  
No. 645

### 해외건설업 신고확인증 (Certification of International Contractor)

상 호 : (주)글로벌엔지니어링  
(Name of Company)

대 표 자 : 김군  
(Name of Company Representative)

법 인 등 록 번 호 ( 생 년 월 일 ) : [ 110111-2733213 ]  
[Corporation registration number(date of Birth)]

신 고 업 종 : 건설엔지니어링업  
(Type of Business) (Engineering)

주된 사무소의 소재지 : 서울특별시 금천구 가산디지털1로 171, 12층13층  
(Address of Company) (가산동, 가산에스케이비원센터)  
(171 Gasan digital 1-ro, Geumcheon-gu, Seoul, Korea)

「해외건설촉진법」 제6조 제1항에 따라 해외건설업의 신고를 하였음을 증명합니다.  
This is to certify that the above mentioned company is an enrolled international contractor in compliance with Clause 1 under Article 6 of Overseas Construction Promotion Act.

2011년 03월 11일

해외건설협회장  
(Chairman of International Contractors Association of Korea)

해외건설업신고서형(상호, 대표자, 영업소소재지)이 변경된 경우 사유발생일로부터 30일 이내 반드시 변경신고를 하시기 바랍니다.

210mmx297mm [표준용지(1종) 120g/㎡]

## KS Q ISO 9001



Registration no.	KQ 091243	IAF Code	34
First issue date	2009-12-21	Issue date	2021-12-21
Expiry date	2024-12-20	Reissue date	2021-12-17

Quality Management System Certificate  
**KS Q ISO 9001:2015/ISO 9001:2015**

We certify that the Quality Management System of the Organization:

**Glotec Engineering Co., Ltd.**

is in compliance with the standard KS Q ISO 9001:2015/ISO 9001:2015 for the following products/services:

**Design, development and engineering service of civil, building, plant(refinery, petrochemistry, general chemistry, power plant, environmental and industrial equipment) at overseas and domestic site and electrical works**

General Manager  
Seung-Chan Lee

Maintenance of the certification is subject to continual surveillance audit and dependent upon the observance of Kiwa Korea's certification criteria.

**Kiwa Korea Ltd.**  
411, SJ Technoville,  
270, Beoldok-ro,  
Geumcheon-gu,  
Seoul, Korea  
Tel +82-2-3397-0101  
Fax +82-2-3397-0105  
URL: www.kiwa.kr

**Certified Sites**  
12-13 F, Gasan SK V1center, 171, Gasan digital 1-ro, Geumcheon-gu, Seoul, Korea



## Certificate of R&D center

[등록번호: vlpB-mmAN-OFCE-cYLy] [발급일자: 2018년 10월 31일]

제 2012112475 호

### 기업부설연구소 인정서

- 연구 소 명: (주)글로벌엔지니어링 R&D Center  
[소속기업명: (주)글로벌엔지니어링]
- 소 재 지: 서울특별시 금천구 가산디지털1로 171  
1201호-1218호 (가산동) 회실 중 1218호 위치
- 신고 연월일: 2018년 10월 29일  
(최초인정일: 2012년 8월 17일)  
※ 변경내역: 소재지 변경

과학기술정보통신부

「기초연구진흥 및 기술개발지원에 관한 법률」 제14조의  
2제1항 및 같은 법 시행령 제27조제1항에 따라 위와 같이  
기업부설연구소로 인정합니다.

2018년 10월 30일

한국산업기술진흥협회장

한국산업기술진흥협회의서 발급되었으며 "http://www.rnd.or.kr"에서 "인증번호"를 입력하면 인증마크 및 유효성을 확인할 수 있습니다.

Construction technical consultancy license	Certification of licensed architect	Firefighting supervision license															
<div style="text-align: center;"> <p>등록번호 : 서울-2-653호</p> <h2 style="margin: 0;">건설기술용역업 등록증</h2> </div> <p>상호 또는 법인명 : (주)글로벌엔지니어링                      서울특별시 금천구 가산디지털1로 171, 12층                      영업소의 소재지 : 1201~1218호, 13층 1301호~1318호(가산동, 가산 에스케이 브이원 센터)                      소속 국가 명 : 대한민국                      성명 (대표자) : 김균      생년월일 : 19 1년 1월 1일                      전문분야(세부분야) : 설계·사업관리 (건설사업관리)                      등록연월일 : 2020년 6월 10일                      「건설기술 진흥법」 제26조제1항에 따라 건설기술용역업자로 등록하였음을 증명합니다.</p> <p style="text-align: right;">2020년 6월 10일</p> <div style="display: flex; justify-content: space-between; align-items: center;"> <span>서울특별시</span> </div>	<p>■ 건축사법 시행규칙[별지 제39호서식] &lt;개정 2020. 6. 18&gt; (앞 쪽)</p> <p>제 2022-금천구-엔지니어링사업자소속건축사-2 호</p> <p><input checked="" type="checkbox"/> 엔지니어링사업자 소속 건축사 신고확인증  <input type="checkbox"/> 건설사업자 소속 건축사 신고확인증</p> <table border="1" style="width: 100%; border-collapse: collapse; margin-top: 5px;"> <tr> <td style="width: 20%;">상호 또는 명칭</td> <td colspan="3">(주)글로벌엔지니어링</td> </tr> <tr> <td>소재지</td> <td colspan="3">서울특별시 금천구 가산디지털1로 171 SKV1센터 12-13층</td> </tr> <tr> <td rowspan="2">신고인 (건축사)</td> <td>성명</td> <td>생년월일</td> <td>19 1년 1월 1일</td> </tr> <tr> <td>황순태</td> <td>자격번호</td> <td>제 6521호</td> </tr> </table> <p><input checked="" type="checkbox"/> 「엔지니어링산업 진흥법」 제21조제1항에 따라 신고한 엔지니어링사업자 위 건축사는  <input type="checkbox"/> 「건설산업기본법」 제2조제7호에 따른 건설사업자                      에 소속한 건축사로서 「건축사법 시행규칙」 제16조1항에 따라 신고를 하였음을 확인합니다.</p> <p style="text-align: right;">2022년08월01일</p> <div style="display: flex; justify-content: space-between; align-items: center;"> <span>서울특별시 금천구청장 (인)</span> </div>	상호 또는 명칭	(주)글로벌엔지니어링			소재지	서울특별시 금천구 가산디지털1로 171 SKV1센터 12-13층			신고인 (건축사)	성명	생년월일	19 1년 1월 1일	황순태	자격번호	제 6521호	<p style="text-align: center;">제 2020-01-00060 호</p> <h2 style="text-align: center; margin: 0;">소방시설업 등록증</h2> <p>업      종 : 일반소방시설설계업(전기,기계)</p> <p>상      호(명칭) : 주식회사 글로벌엔지니어링</p> <p>대      표      자 : 김균                      생      년      월      일 : 19</p> <p>영업소 소재지 : 서울특별시 금천구 가산디지털1로 171, 12층                      1201호-1218호, 13층 1301호-1318호(가산동, 가산 에스케이 브이원 센터)                      「소방시설공사업법」 제4조 제1항에 따라 소방시설설계업이                      위와 같이 등록되었음을 증명합니다.</p> <p style="text-align: right;">2020년 4월 17일</p> <div style="display: flex; justify-content: space-between; align-items: center;"> <span>서울특별시</span> </div>
상호 또는 명칭	(주)글로벌엔지니어링																
소재지	서울특별시 금천구 가산디지털1로 171 SKV1센터 12-13층																
신고인 (건축사)	성명	생년월일	19 1년 1월 1일														
	황순태	자격번호	제 6521호														

210mm× 297mm(보존용지(1종) 120g/m)

## License of Elec. Power Design & Engineering

제 서울E-2-585호



### 설계업등록증

- 회 사 명 : (주)글로텍엔지니어링
- 소 재 지 : 서울시 금천구 가산디지털1로 171, 12층, 13층  
(가산동, 가산에스케이브이원센터)
- 대 표 자 명 : 김균
- 법인등록번호 : 110111-2733213
- 설계업의종류 : 전문1종 설계업
- 등록연월일 : 2022년 5월 20일
- 영 업 범 위 : 전력시설물의 설계도서 작성

「전력기술관리법」 제14조 제1항 같은 법 시행규칙 제25조 제3항에 따라 설계업 등록을 하였음을 증명합니다.

2022년 5월 20일

서울특별시

## Certification of Excellent ESG



NO 2022-137

### Certificate of Excellent ESG

Company GLOTEC ENGINEERING CO.,LTD.  
Representative Kim Gyun  
Expiration August, 22, 2024

We hereby certify that the company named above is a SME(Small and Medium Enterprise) that fulfills corporate social responsibility of the global standard, based on the 2021 ESG implementation of examination conducted by KCCP(Korea Commission for Corporate Partnership).



KOREA COMMISSION FOR CORPORATE PARTNERSHIP

## Certified as a Main-Biz Company from Korean Ministry of SMEs



제 210104-02110 호

### 경영혁신형 중소기업(Main-Biz) 확인서

업 체 명 : (주)글로텍엔지니어링  
대표자명 : 김균  
주 소 : 서울 금천구 가산디지털1로 171  
1201-1218호, 1301-1318호 (가산동)  
유효기간 : 2021.09.09 ~ 2024.09.08

위 업체는 경영혁신형 중소기업 육성사업에 의해 선정된 경영혁신형 중소기업(Main-Biz)임을 확인합니다.

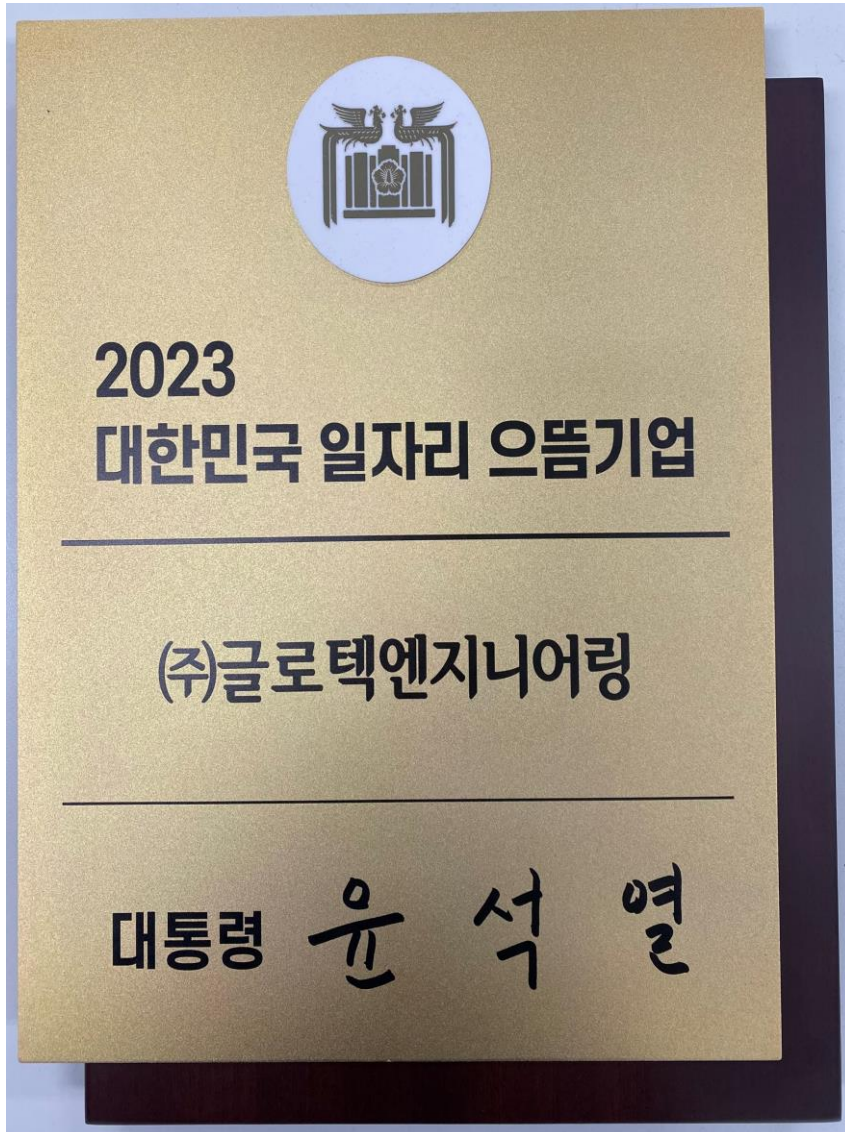


2021년 09월 09일

중소벤처기업부장



※ Awarded as an outstanding job-creating company  
by the Korean Government



제 2023-16 호

## 대한민국 일자리 으뜸기업 인증서

기 업 명 : (주)글로벌엔지니어링

법인등록번호 : 110111-2733213

사업자등록번호 : 108-81-59497

소 재 지 : 서울특별시 금천구 가산디지털1로 171

인 증 기 간 : 2023년 9월 4일 ~ 2026년 9월 3일

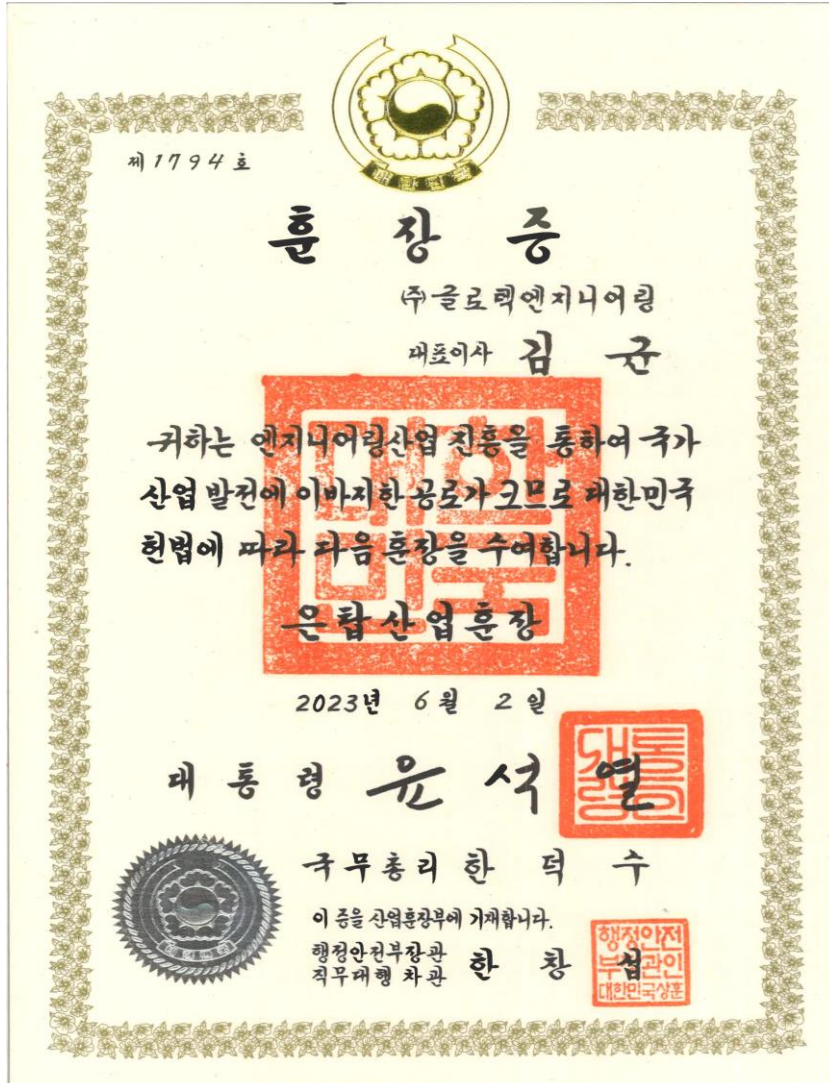
위 기업은 양질의 일자리 창출에 앞장선  
우수한 기업으로 2023년 대한민국 일자리  
 으뜸기업으로 선정합니다.

2023년 9월 4일

고용노동부장관



## ※ Awarded the Silver Tower Order of Industrial Service Merit from Korean Government



## ※ Company Credit Rating

### CREDIT RATING

DNA PLUS  
(주)글로텍엔지니어링 | 108-81-59497 | 김균 | ECC202304008653

#### 기업정보

기업제명	(주)글로텍엔지니어링 (Glotec Engineering Co.,Ltd.)			신용등급
사업자등록번호	108-81-59497	법인번호	110111-273213	BBB+
본사주소	(08503)서울특별시 금천구 가산디지털1로 171, 12층 1201호-1218호, 13층 1301호-1318호(가산동)			
대표자	김균			현금흐름등급
전화번호	02-6345-7015			A
산업분류	기타 엔지니어링 서비스업			
설립일	2003년 03월 07일			
재무결산일	2022년 12월 31일	보고서 최종수정일	2023년 04월 14일	
신용등급 유효기간	2023년 04월 14일~2024년 04월 13일			

#### 신용등급이력

결산기준일	정기평가		허반기평가			Watch 등급	
	평가일	신용등급	현금흐름등급	평가일	신용등급		현금흐름등급
2022/12/31	2023/04/14	BBB+	A	-	-	정상 2023년04월09일 현재	
2021/12/31	2022/04/12	BBB+	C+	2022/08/31	BBB+		C+
2020/12/31	2021/04/12	BBB-	A	2021/08/18	BBB-		A

#### 주요 경영 현황

주요제품	경영정보	판매처(%)		주요주주(%)			
		종업원	중기업	외감	자본금	주거래은행	주주명
산업플랜트설계용역	종업원: 549 명	중기업: 34	외감: 13	자본금: 350 백만원	주거래은행: KEB하나은행 구로디지털지점	김균	59.6
반도체설계용역	중기업: 31	외감: 7	자본금: 2	주거래은행: (주)한국가스기술공사			
발전에너지설계용역	외감: 13	자본금: 7	주거래은행: 2				

#### 주요 재무 현황

결산기준일	총자산		매출성장율		2020/12/31	2021/12/31	2022/12/31
	2022/12/31	2021/12/31	2020/12/31	2021/12/31			
2022/12/31	68,206	69,136	31.5	-6.7	1.3	7.7	5.4
2021/12/31	69,136	59,916	-6.7	1.3	7.7	5.4	84.5
2020/12/31	59,916		1.3				229.9

#### Report of E-Credible (2023)

- Credit Rating : BBB+
- Watch Rating : Normal
- ( Based on Apr. 9<sup>th</sup> , 2023)

# ※ Great Culture Built with our Customers



We, Glotec Engineering, aim to cultivate a customer-centered corporate culture where we prioritize our customers and employees.



# SUSTAINABLE GROWTH

Glotec engineering pursues sustainable growth through a strong corporate culture that values its customers and creates a great workplace and quality of life for all.



- 1 Received the Presidential Commendation for Korea Engineering and Consulting Association (Oct. 2013)
- 2 Received the Silver Tower Order of Industrial Service Merit from Korean government. (June. 2023)
- 3 Technical Service (MOU) signing ceremony ( July. 2020 Korea Gas Technology Corporation)

# SUSTAINABLE GROWTH

- 1 An outdoor activity like a hiking to communicate closely.  
(April, 2010)
- 2 Strengthened the teamwork through the company track meet.  
(October, 2013)
- 3 Promoted strong fellowship in the year-end party.  
(December, 2013)
- 4 Event for the 15<sup>th</sup> anniversary of the founding.  
(May, 2018)



## CHALLENGE AND ACHIEVEMENT

With our challenge, innovation and passion,  
we are creating a better world, better future.

